

RAPID CITY, SOUTH DAKOTA

ILS or LOC Y RWY 31

LOC I-RCA 110.3	APCH CRS 310°	Rwy ldg 13,497 TDZE 3192 Arprt Elev 3276
---------------------------	-------------------------	---

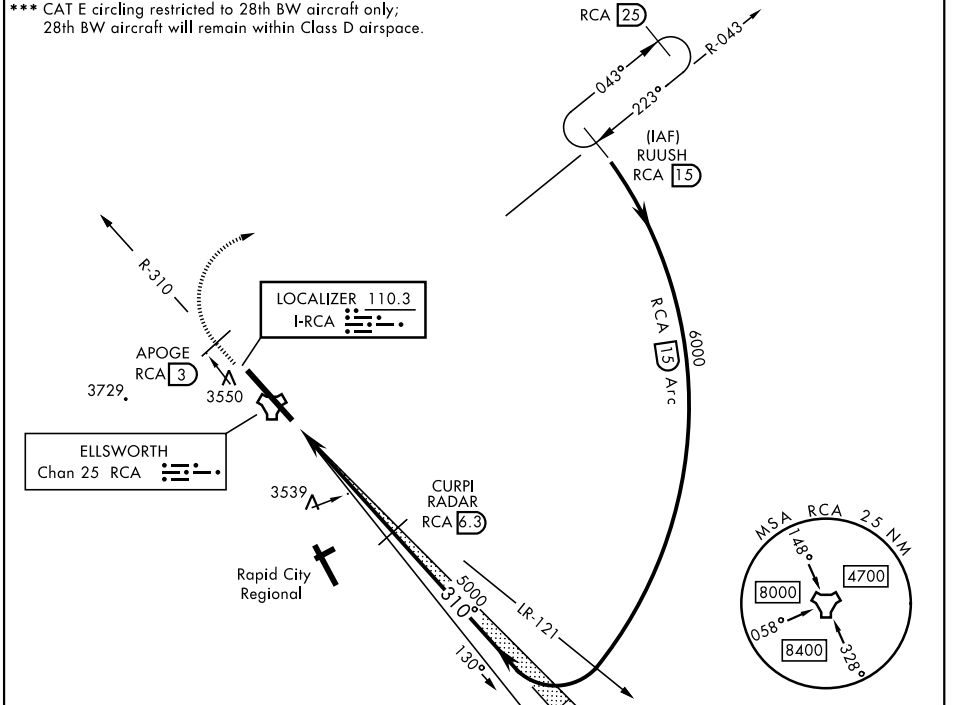
[USAF]

ELLSWORTH AFB (KRCA)

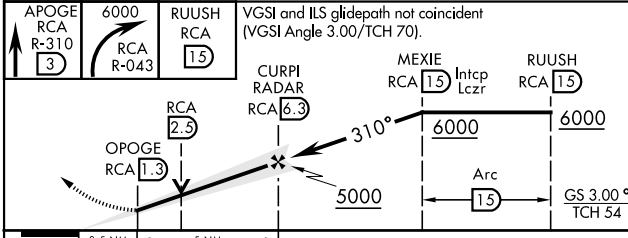
RADAR or DME required.	ALSF-1 	MISSED APPROACH: Track outbound RCA R-310 to 3 DME (APOGE), then turn right to join RCA R-043 outbound to RCA 15 DME (RUUSH) and hold. Maintain 6000.
------------------------	------------	---

ATIS ★ 120.625 269.9	APP CON 119.5 259.1	TOWER ★ 126.05 253.5	GND CON 121.8 275.8
--------------------------------	-------------------------------	--------------------------------	-------------------------------

*** CAT E circling restricted to 28th BW aircraft only;
28th BW aircraft will remain within Class D airspace.

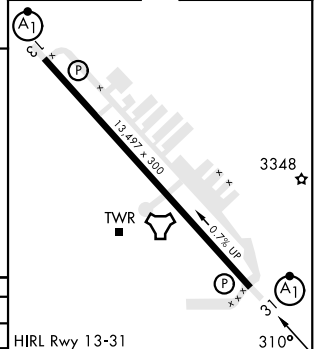


4364
EMERG SAFE ALT 100 NM 9800



CATEGORY	A	B	C	D	E
S-ILS 31*	3392/24				
S-LOC 31**	3800/24	608 (600-1/2)	3800-1 3/8	608 (600-1 3/8)	
CIRCLING ***	3860-1 584 (600-1)	3880-1 604 (700-1)	3880-1 3/4 604 (700-1 3/4)	3980-2 1/4 704 (800-2 1/4)	4040-2 3/4 764 (800-2 3/4)

ELEV	3276	TDZE	3192
------	------	------	------



HIRL Rwy 13-31					
FAF to MAP 5 NM					
Knots	60	90	120	150	180
Min:Sec	5:00	3:20	2:30	2:00	1:40

RAPID CITY, SOUTH DAKOTA

44°09'N-103°06'W

ELLSWORTH AFB (KRCA)

Amdt 1 15SEP16

ILS or LOC Y RWY 31

NC-1, 15 MAY 2025 to 12 JUN 2025

NC-1, 15 MAY 2025 to 12 JUN 2025