

RAPID CITY, SOUTH DAKOTA

HI-TACAN Z RWY 31

TACAN RCA Chan 25	APCH CRS 302°	Rwy ldg 13,497 TDZE 3192 Arprt Elev 3276
-----------------------------	-------------------------	---

[USAF]

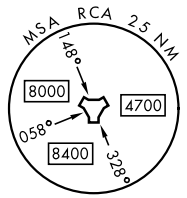
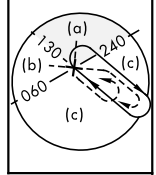
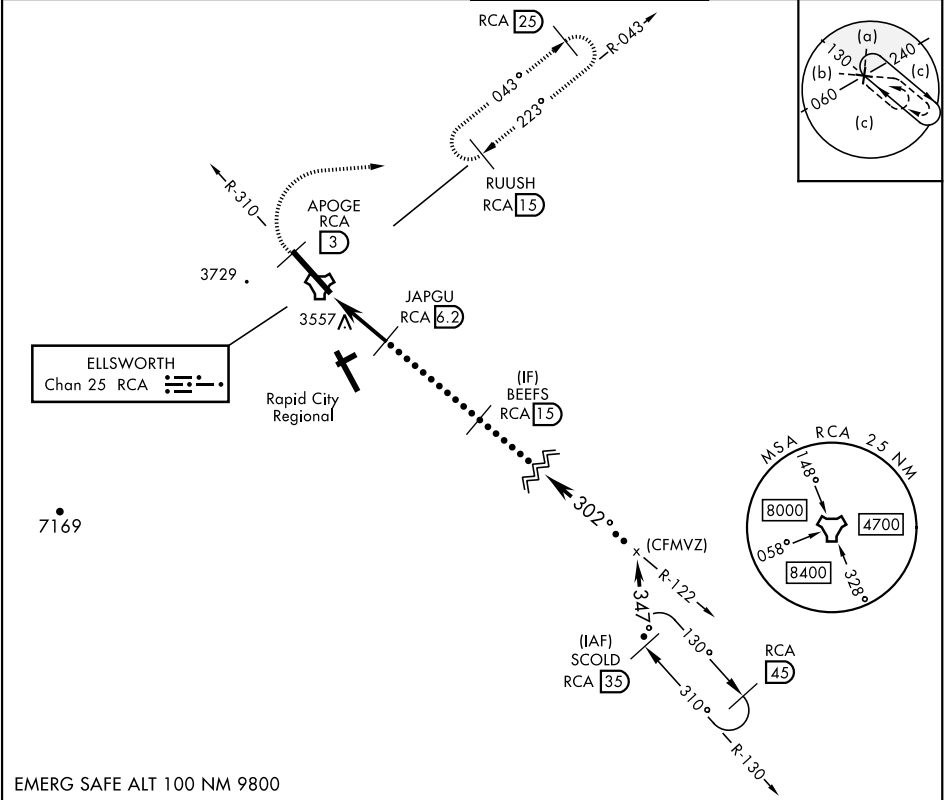
ELLSWORTH AFB (KRCA)

▼ * When ALS inop, increase CAT CDE vis to 1 3/4 mile.
 ** CAT E circling restricted to 28th BW aircraft only; 28th BW aircraft will remain within Class D airspace.

ALSF-1

MISSED APPROACH: Track outbound RCA R-310 to 3 DME (APOGE), then turn right to join RCA R-043 to 15 DME (RUUSH) and hold. Maintain 6000.

ATIS ★ 120.625 269.9	APP CON 119.5 259.1	TOWER ★ 126.05 253.5	GND CON 121.8 275.8
--------------------------------	-------------------------------	--------------------------------	-------------------------------



EMERG SAFE ALT 100 NM 9800

APOGE RCA R-310 (3)	6000	RUUSH RCA (15)	SCOLD RCA (35)	ELEV 3276	TDZE 3192
RCA TACAN	RCA 2.6 (2.6)	JAPGU RCA 6.2 (6.2)	BEEFS RCA 15 (15)	TWR	
IYODO RCA 1.3 (1.3)	5000	Intcp R-122 (CFMVZ)	FL180	3348	
TCH 70			302°		
CATEGORY	C	D	E	HIRL Rwy 13-31	
S-31*	3820-1 1/8	628	(600-1 1/8)	302°	
CIRCLING**	3880-1 7/8 604 (700-1 7/8)	3980-2 1/4 704 (800-2 1/4)	4040-2 3/4 764 (800-2 3/4)	302°	

RAPID CITY, SOUTH DAKOTA

44°09'N-103°06'W

ELLSWORTH AFB (KRCA)

Amdt 1 15SEP16

HI-TACAN Z RWY 31

NC-1, 15 MAY 2025 to 12 JUN 2025

NC-1, 15 MAY 2025 to 12 JUN 2025