

# HI-TACAN Z RWY 13

TACAN RCA Chan <b>25</b>	APCH CRS <b>136°</b>	Rwy ldg <b>13,497</b> TDZE <b>3276</b> Arprt Elev <b>3276</b>
-----------------------------	-------------------------	---

[USAF]

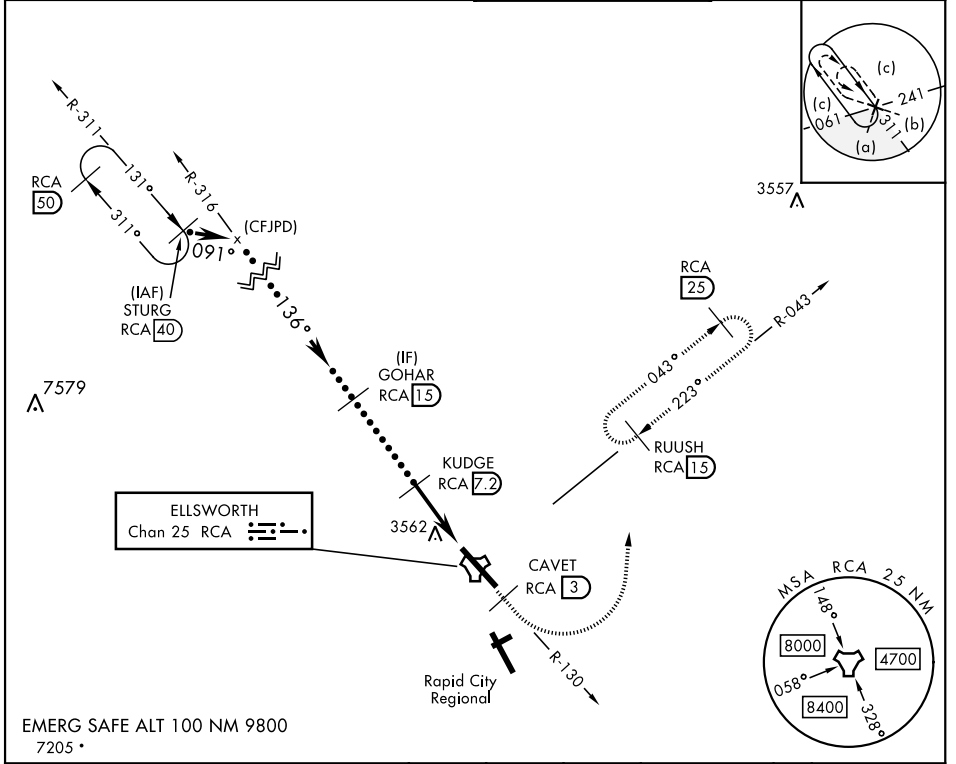
ELLSWORTH AFB (KRCA)

\* When ALS inop, increase CAT CDE vis to 1½ mile.  
 \*\* CAT E circling restricted to 28th BW aircraft only; 28th BW aircraft will remain within Class D airspace.



**MISSED APPROACH:** Track outbound RCA R-130 to 3 DME (CAVET), then turn left to join RCA R-043 to 15 DME (RUUSH) and hold. Maintain 6000.

ATIS * <b>120.625 269.9</b>	APP CON <b>119.5 259.1</b>	TOWER * <b>126.05 253.5</b>	GND CON <b>121.8 275.8</b>
--------------------------------	-------------------------------	--------------------------------	-------------------------------



STURG RCA 40 Intcp R-316 (CFJPD) GOHAR RCA 15 KUDGE RCA 7.2 TUTGE RCA 1.9 RCA TACAN 5.9 NM 0.3	CAVET RCA R-130 3 6000 RCA R-043	RUUSH RCA 15	ELEV 3276 TDZE 3276
CATEGORY S-13 * CIRCILING **	C 3820/60 3880-1¾ 604 (700-1¾)	D 544 (600-1½) 3980-2¼ 704 (800-2¼)	E 4040-2¾ 764 (800-2¾)

# HI-TACAN Z RWY 13

HIRL Rwy 13-31

NC-1, 15 MAY 2025 to 12 JUN 2025

NC-1, 15 MAY 2025 to 12 JUN 2025