

# HI-ILS or LOC Z RWY 13

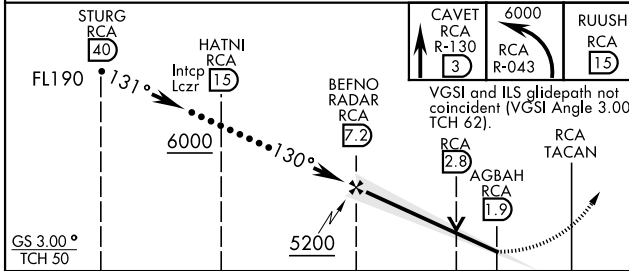
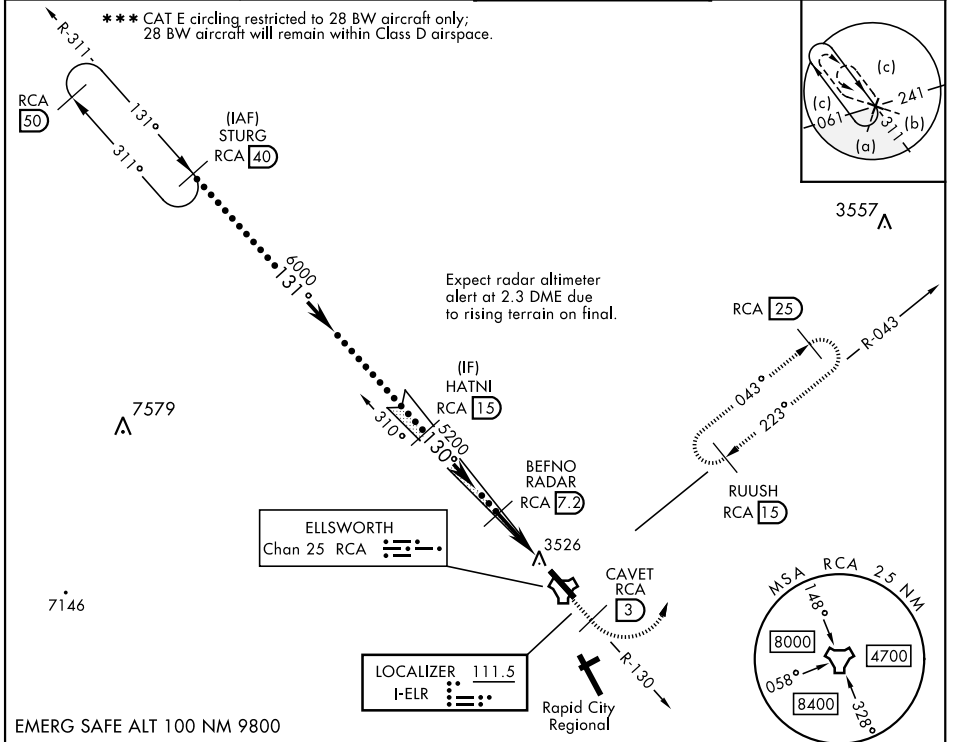
LOC I-ELR <b>111.5</b>	APCH CRS <b>130°</b>	Rwy ldg <b>13,497</b> TDZE <b>3276</b> Arpt Elev <b>3276</b>
---------------------------	-------------------------	--

[USAF]

ELLSWORTH AFB (KRCA)

RADAR or DME required.	ALSF-1 <b>(A1)</b>	MISSED APPROACH: Track outbound RCA R-130 to 3 DME (CAVET), then turn left to join RCA R-043 to 15 DME (RUUSH) and hold. Maintain 6000.
------------------------	-----------------------	---

ATIS ★ <b>120.625 269.9</b>	APP CON <b>119.5 259.1</b>	TOWER ★ <b>126.05 253.5</b>	GND CON <b>121.8 275.8</b>
--------------------------------	-------------------------------	--------------------------------	-------------------------------



ELEV	3276	TDZE	3276		
HIRL Rwy 13-31					
FAF to MAP 5.3 NM					
Knots	120	140	160	180	200
Min:Sec	2:39	2:16	1:59	1:46	1:35

CATEGORY	C	D	E
S-ILS 13 *	3476/24	200	(200-½)
S-LOC 13 **	3780/55	504	(600-1)
CIRCLING ***	3880-1¾ 604 (700-1¾)	3980-2¼ 704 (800-2¼)	4040-2¾ 764 (800-2¾)

# HI-ILS or LOC Z RWY 13

NC-1, 15 MAY 2025 to 12 JUN 2025

NC-1, 15 MAY 2025 to 12 JUN 2025