

QUANTICO, VIRGINIA

ILS or LOC/DME RWY 2

LOC/DME I-NYG 108.3 Chan 20	APCH CRS 023°	Rwy Idg TDZE Arpt Elev 4250 9 10
-------------------------------------------------	-------------------------	----------------------------------------------------------------------

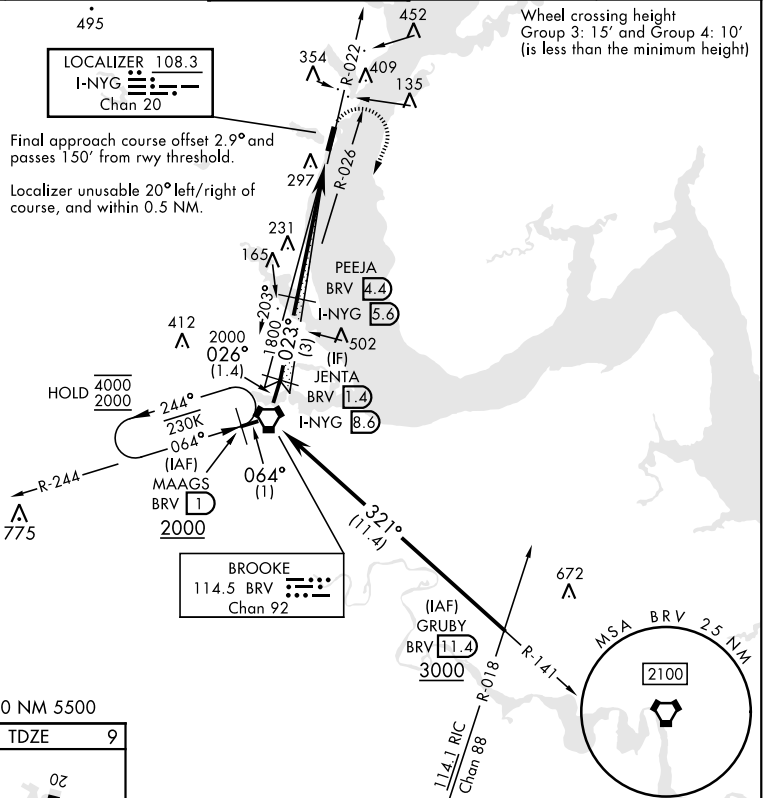
[USN]

QUANTICO MCAF (TURNER FLD) (KNYG)

TACAN required.
* Circling not authorized W of Rwy 2-20.

MISSED APPROACH: Climbing right turn to 2000 direct BRV VORTAC, then via BRV R-244 to MAGGS and hold.

ATIS 263.15	POTOMAC APP/DEP CON 128.525 306.925	TOWER ★ 118.6 (CTAF) 0360.2	GND CON 121.75 348.7	ASR
-----------------------	-----------------------------------------------	---------------------------------------	--------------------------------	-----

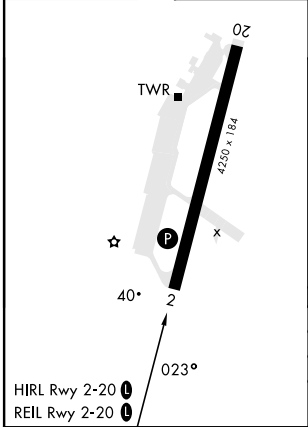


NE-3, 15 MAY 2025 to 12 JUN 2025

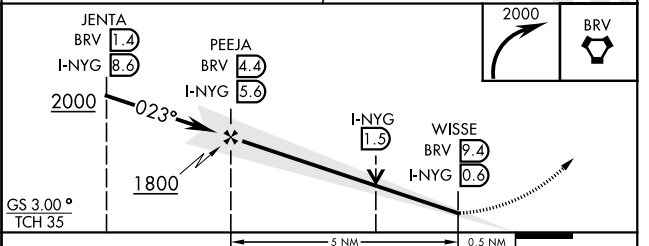
NE-3, 15 MAY 2025 to 12 JUN 2025

EMERG SAFE ALT 100 NM 5500

ELEV	10	TDZE	9
------	----	------	---



HIRL Rwy 2-20
REIL Rwy 2-20



CATEGORY	A	B	C	D
S-ILS 2	259-¾		250	(300-¾)
S-LOC 2	500-1	491 (500-1)	500-1¾	491 (500-1¾)
CIRCLING*	500-1 490 (500-1)	680-1 670 (700-1)	760-2¼ 750 (800-2¼)	800-2½ 790 (800-2½)

QUANTICO, VIRGINIA

38°30'N-77°18'W

QUANTICO MCAF (TURNER FLD) (KNYG)

Amtd 1 29DEC22

ILS or LOC/DME RWY 2