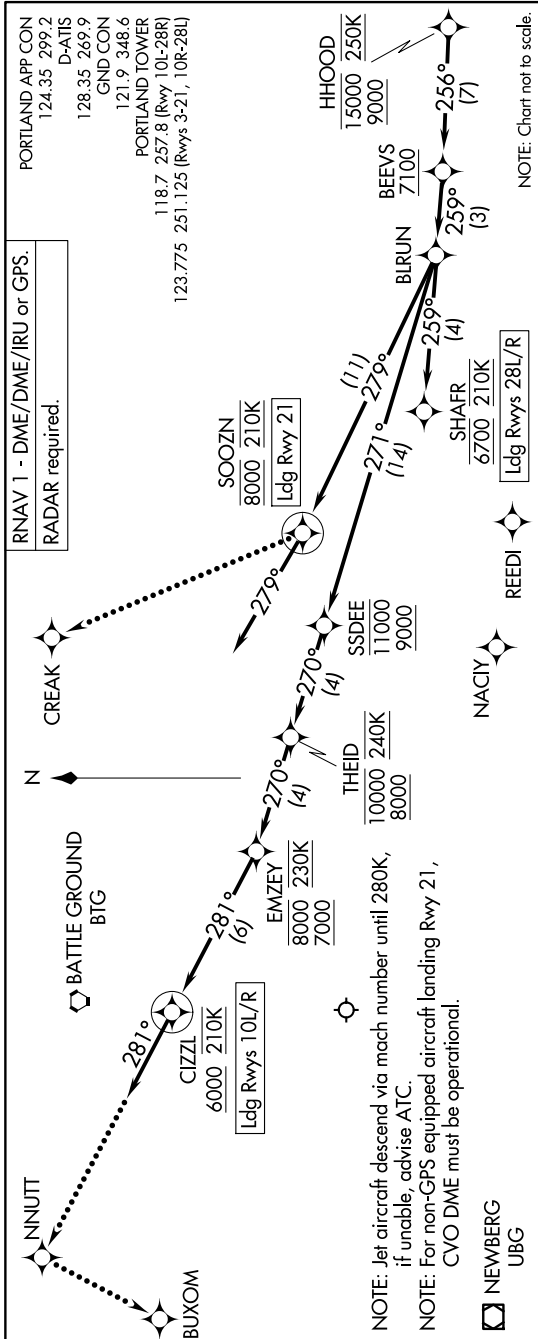


# HHOOD FIVE ARRIVAL (RNAV) Arrival Routes

NW-1, 15 MAY 2025 to 12 JUN 2025



## ARRIVAL ROUTE DESCRIPTION

From HHOOD on track 256° to cross BEEVS at or above 7100, then on track 259° to BIRUN.  
**LANDING RUNWAYS 10L/R:** From BIRUN on track 271° to cross SSDEE between 9000 and 11000, then on track 270° to cross THEID between 8000 and 10000 and at 240K, then on track 270° to cross EMZEY between 7000 and 8000 and at 230K, then on track 281° to cross CIZZL at or above 6000 and at 210K, then on track 281°. Expect RADAR vectors to final approach course.  
**LANDING RUNWAY 21:** From BIRUN on track 279° to cross SOOZN at 8000 and at 210K, then on track 279°. Expect RADAR vectors to final approach course.

**LANDING RUNWAYS 28L/R:** From BIRUN on track 259° to cross SHAFR at 6700 and at 210K. Expect RNAV or ILS Rwy 28L/R approach.

## LOST COMMUNICATIONS

Maintain Rwy transition terminus altitude until established on approach procedure.  
**RUNWAYS 10L/R:** After CIZZL, proceed to NNUJT, then left turn to BUXOM, conduct the ILS or LOC Rwy 10L approach.  
**RUNWAY 21:** After SOOZN turn right to CREAK and proceed on the LOC/DME Rwy 21 approach.  
**RUNWAYS 28L/R:** After SHAFR proceed on the ILS or LOC Rwy 28R approach.

NW-1, 15 MAY 2025 to 12 JUN 2025

# HHOOD FIVE ARRIVAL (RNAV) Arrival Routes