

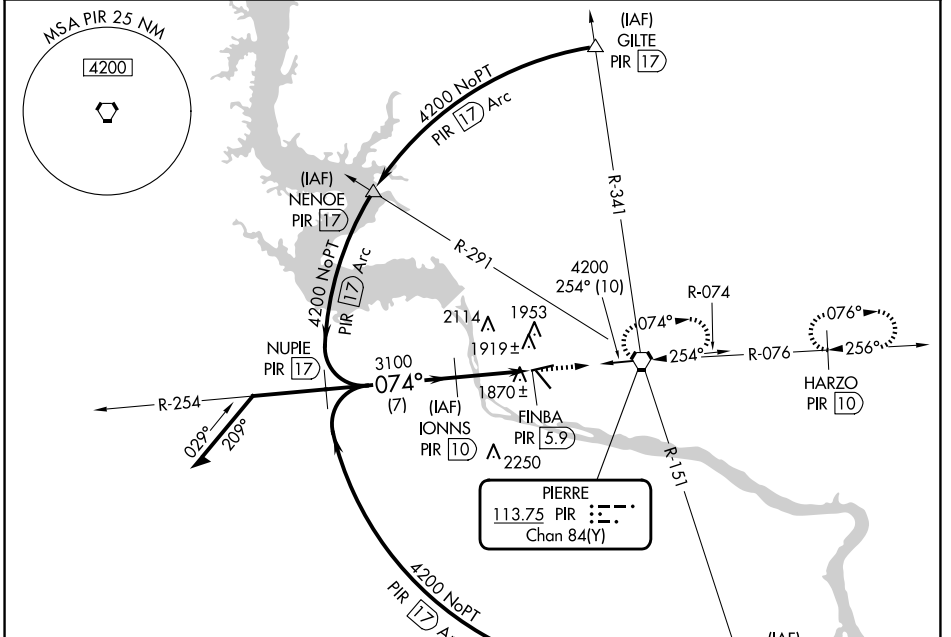
VORTAC PIR <b>113.75</b> Chan <b>84(Y)</b>	APP CRS <b>074°</b>	Rwy ldg TDZE Apt Elev	<b>6880</b> <b>1744</b> <b>1744</b>
--	------------------------	-----------------------------	---

# VOR/DME or TACAN RWY 7

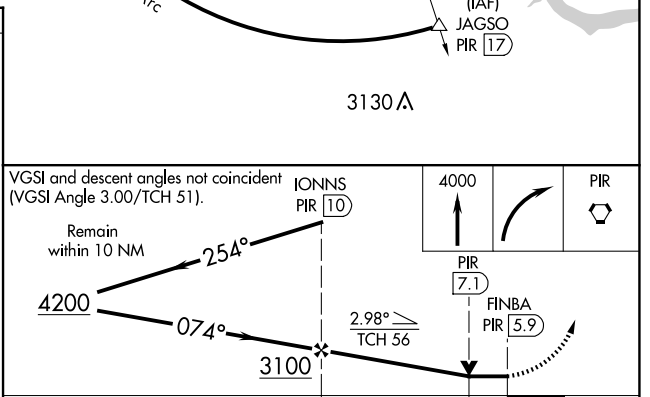
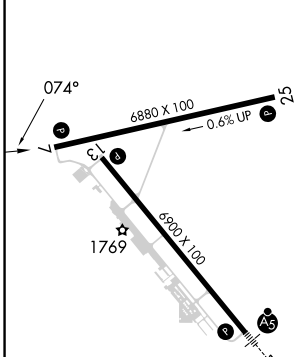
PIERRE RGNL (PIR)

**⚠** MISSED APPROACH: Climb to 4000 then right turn direct PIR VORTAC and hold. (TACAN aircraft continue via PIR R-076 to HARZO 10 DME and hold East, right turns, 256° inbound).

ASOS <b>119.025</b>	MINNEAPOLIS CENTER <b>125.1 269.1</b>	CTAF <b>122.7</b>	UNICOM <b>122.95</b>
------------------------	--	----------------------	-------------------------



ELEV 1744	<b>D</b>	TDZE 1744
-----------	----------	-----------



CATEGORY	A	B	C	D
S-7	2180-1	436 (500-1)	2180-1¼ 436 (500-1¼)	2180-1½ 436 (500-1½)
<b>C</b> CIRCLING	2240-1 496 (500-1)	2300-1 556 (600-1)	2400-1¾ 656 (700-1¾)	2460-2¼ 716 (800-2¼)

# VOR/DME or TACAN RWY 7

NC-1, 15 MAY 2025 to 12 JUN 2025

NC-1, 15 MAY 2025 to 12 JUN 2025