

HI-TACAN Y RWY 30

TACAN MUO Chan 87	APCH CRS 295°	Rwy Idg 13,510 TDZE 2996 Arprt Elev 2996
-----------------------------	-------------------------	---

[USAF]

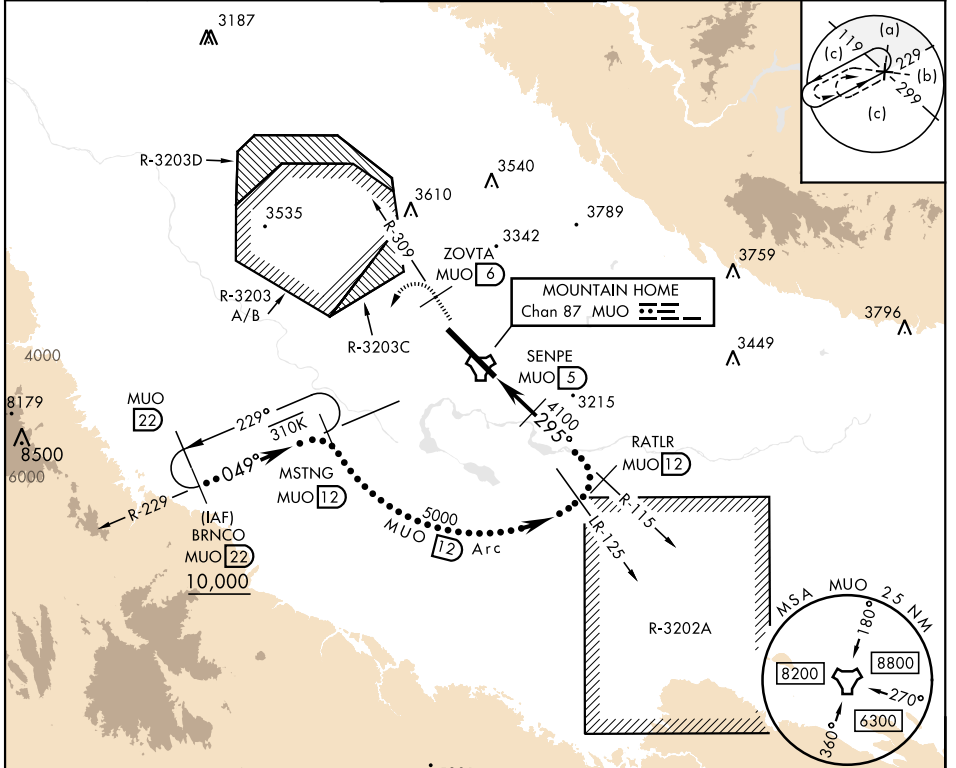
MOUNTAIN HOME AFB (KMUO)

▼ * When ALS inop, increase CAT CDE vis to 1 3/8 miles.
 ** Circling NA NE of Rwy 12-30.

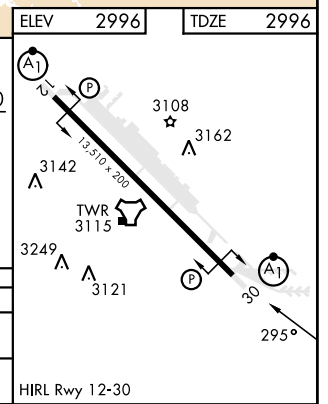


MISSED APPROACH: Climb to 10,000 via MUO R-309 to ZOVRTA/6 DME, turn left and intercept MUO R-229 to MSTNG/12 DME and hold. Continue climb in hold to 10,000.

ATIS 273.5	MOUNTAIN HOME APP CON 124.8 259.1	MOUNTAIN HOME TOWER 133.85 253.5	GND CON 120.5 275.8	CLNC DEL 127.1 290.425
----------------------	---	--	-------------------------------	----------------------------------



	ELEV 2996	TDZE 2996
10,000	ZOVRTA MUO R-309	MSTNG MUO 12
↑	MUO 6	MUO 12
	SENPE MUO 5	BRNCO MUO 22
	MUO TACAN	MUO 27
	JERLU MUO 1.1	
	4100	5000
	6100	10,000
	049°	295°
	Arc	TCH 40
	3.9 NM	
CATEGORY	C	D
S-30 *	3480/50	484 (500-1)
CIRCLING **	3560-1 1/2 564 (600-1 1/2)	3560-2 564 (600-2)
		3700-2 1/2 704 (800-2 1/2)



HI-TACAN Y RWY 30

NW-1, 15 MAY 2025 to 12 JUN 2025

NW-1, 15 MAY 2025 to 12 JUN 2025