

# HI-TACAN Y RWY 12

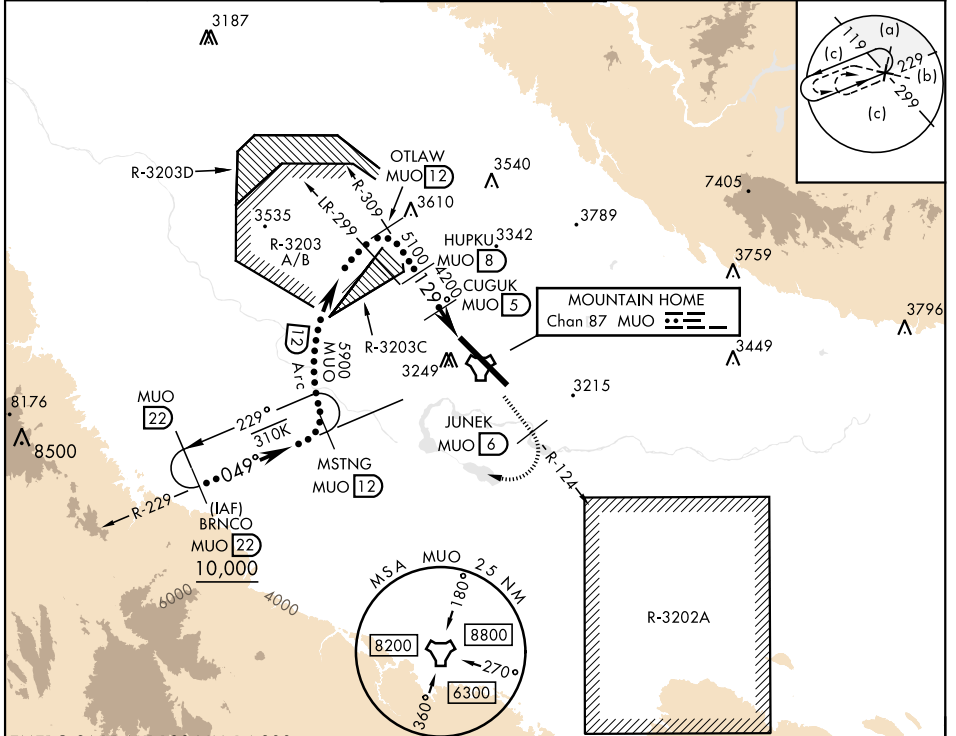
TACAN MUO Chan 87	APCH CRS 129°	Rwy Ildg 13,510 TDZE 2987 Arprt Elev 2996
-------------------	---------------	---

[USAF]

MOUNTAIN HOME AFB (KMUO)

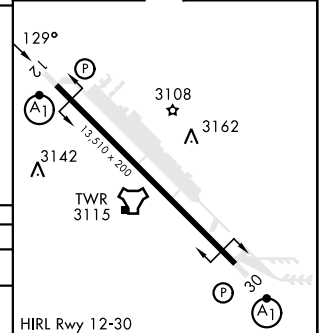
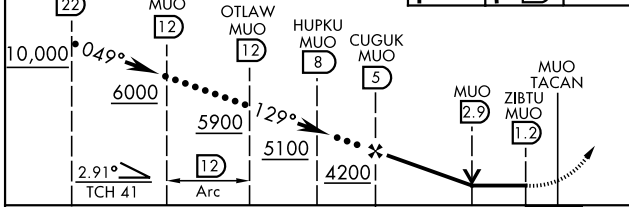
<p>▼ * When ALS inop, increase CAT CDE vis to 1 3/8 miles. ** Circling NA NE of Rwy 12-30.</p>	<p>ALSF-1 A1</p>	<p>MISSED APPROACH: Climb to 10,000 via MUO R-124 to JUNEK/6 DME, turn right and intercept MUO R-229 to MSTNG/12 DME and hold. Continue climb in hold to 10,000.</p>
--	----------------------	--

ATIS 273.5	MOUNTAIN HOME APP CON 124.8 259.1	MOUNTAIN HOME TOWER 133.85 253.5	GND CON 120.5 275.8	CLNC DEL 127.1 290.425
------------	-----------------------------------	----------------------------------	---------------------	------------------------



EMERG SAFE ALT 100 NM 14,200

VGSIs and descent angles not coincident (VGSi Angle 2.50/TCH 41).		10,000 MUO R-124	JUNEK MUO 6	MSTNG MUO 12	ELEV 2996	TDZE 2987
---	--	------------------	-------------	--------------	-----------	-----------



CATEGORY	C	D	E
S-12 *	3480/50	493 (500-1)	
CIRCLING **	3560-1 1/2 564 (600-1 1/2)	3560-2 564 (600-2)	3700-2 1/2 704 (800-2 1/2)

HIRL Rwy 12-30

# HI-TACAN Y RWY 12

NW-1, 15 MAY 2025 to 12 JUN 2025

NW-1, 15 MAY 2025 to 12 JUN 2025