

STANFIELD FOUR DEPARTURE

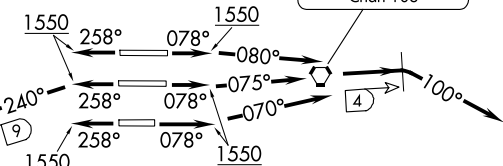
AL-322 (FAA)

PHOENIX SKY HARBOR INTL (PHX)
PHOENIX, ARIZONA

**TOP ALTITUDE:
8000**

PHOENIX DEP CON
126.8 269.6
D-ATIS
127.575
CLNC DEL
118.1 269.2
CPDLC
GND CON
119.75 269.2 (NORTH)
132.55 269.2 (SOUTH)
PHOENIX TOWER
118.7 278.8 (Rwy 8-26)
120.9 254.3 (Rwys 7L-25R, 7R-25L)

PHOENIX
115.6 PXR
Chan 103



TAKEOFF MINIMUMS

Rwy 7L/7R/8: Standard with minimum climb of 300' per NM to 8000.

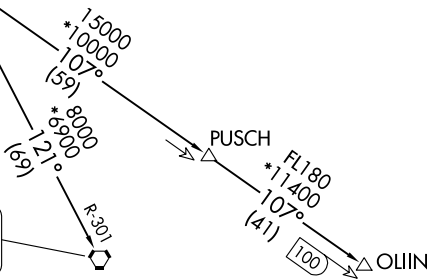
Rwy 25L/25R/26: Standard with minimum climb of 350' per NM to 8000.

NOTE: STANFIELD DEPARTURE restricted to turbojet and turboprop aircraft only.

NOTE: RADAR and DME required.

STANFIELD
114.8 TFD
Chan 95

TUCSON
116.0 TUS
Chan 107



NOTE: Chart not to scale.

DEPARTURE ROUTE DESCRIPTION

TAKEOFF RUNWAY 8: Climb heading 078° to 1550, then climbing right turn heading 080°, at 4 DME east of PXR VORTAC, climbing right turn heading 100°. Thence. . .

TAKEOFF RUNWAY 7L: Climb heading 078° to 1550, then climbing left turn heading 075°, at 4 DME east of PXR VORTAC, climbing right turn heading 100°. Thence. . .

TAKEOFF RUNWAY 7R: Climb heading 078° to 1550, then climbing left turn heading 070°, at 4 DME east of PXR VORTAC, climbing right turn heading 100°. Thence. . .

TAKEOFF RUNWAY 25L/25R/26: Climb heading 258° to 1550, then climbing left turn heading 240°, at 9 DME west of PXR VORTAC, climbing left turn heading 160°. Thence. . .

. . . maintain 8000, expect RADAR vectors to TFD R-340 to TFD VORTAC. Thence via (Transition). Expect further clearance to filed altitude 3 minutes after departure.

LOST COMMUNICATIONS: Expect filed altitude 3 minutes after departure.

OLIIN TRANSITION (TFD4.OLIIN): From over TFD VORTAC on TFD R-107 to OLIIN INT.

TUCSON TRANSITION (TFD4.TUS): From over TFD VORTAC on TFD R-121 and TUS R-301 to TUS VORTAC.

STANFIELD FOUR DEPARTURE

(TFD4.TFD) 25JUN15

PHOENIX, ARIZONA
PHOENIX SKY HARBOR INTL (PHX)

SW-4, 15 MAY 2025 to 12 JUN 2025

SW-4, 15 MAY 2025 to 12 JUN 2025