


WAAS CH 65811 W07A	APP CRS 078°	Rwy Idg 10300 TDZE 1116 Apt Elev 1135
--	------------------------	--

RNAV (GPS) Y RWY 7L

PHOENIX SKY HARBOR INTL (PHX)

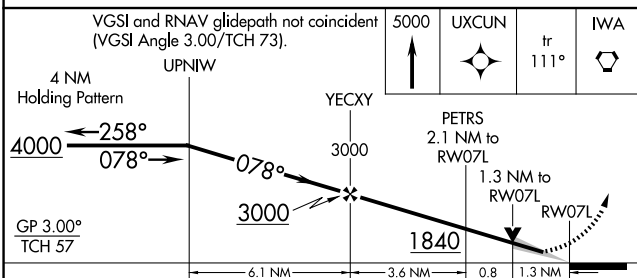
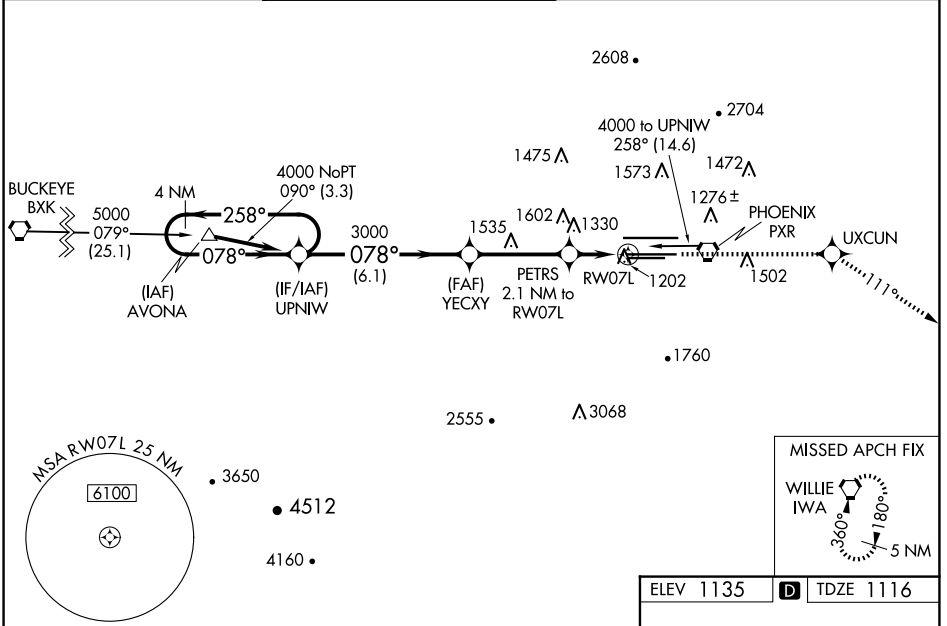
RNP APCH - GPS.

▼ For inop ALS, increase visibility LPV all Cats to RVR 4500, LNAV/VNAV all Cats to RVR 6000, LNAV Cats C/D to 1 3/8 SM. For uncompensated Baro-VNAV systems, LNAV/VNAV NA below -17°C or above 46°C. Simultaneous approach authorized. Use of FD or AP providing RNAV track guidance required during simultaneous operations. LNAV procedure NA during simultaneous operations.

MALSR 

MISSED APPROACH: Climb to 5000 direct UXCUN and via 111° track to IWA VORTAC and hold.

D-ATIS 127.575	PHOENIX APP CON 128.65 353.9	PHOENIX TOWER 118.7 278.8 (Rwy 8-26) 120.9 254.3 (Rwy 7L-25R, 7R-25L)	GND CON 119.75 269.2 (N) 132.55 269.2 (S)	CLNC DEL 118.1 269.2	CPDLC
--------------------------	--	---	---	--------------------------------	-------



ELEV 1135 **D** TDZE 1116

11489 X 150

TWR 1428

10300 X 150

7800 X 150

255

25R

078°

HIRL Rwy 8-26, 7L-25R and 7R-25L
REIL Rwy 26

CATEGORY	A	B	C	D
LPV DA	1389/24		273 (300-1/2)	
LNAV/VNAV DA	1519/50		403 (400-1)	
LNAV MDA	1580/24	464 (500-1/2)	1580/40 464 (500-3/4)	1580/50 464 (500-1)
C CIRCLING	1740-1	605 (700-1)	2040-2 3/4 905 (1000-2 3/4)	2560-3 1425 (1500-3)

SW-4, 15 MAY 2025 to 12 JUN 2025

SW-4, 15 MAY 2025 to 12 JUN 2025