

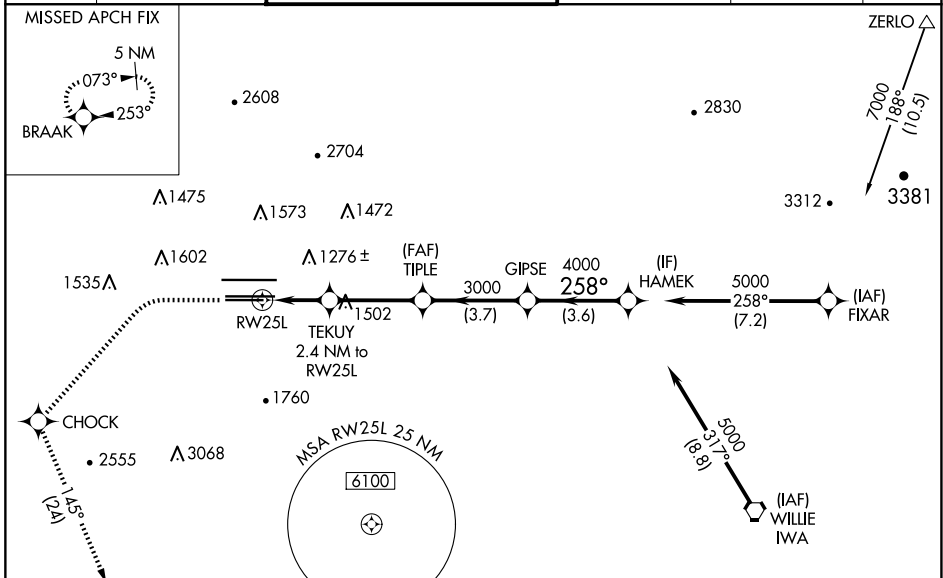
WAAS CH <b>82211</b> <b>W25B</b>	APP CRS <b>258°</b>	Rwy Idg TDZE Apt Elev	<b>7800</b> <b>1126</b> <b>1135</b>
--	------------------------	-----------------------------	---

# RNAV (GPS) Y RWY 25L

PHOENIX SKY HARBOR INTL (PHX)

RNP APCH-GPS.	MALSR 	MISSED APPROACH: Climb to 1900 then climbing left turn to 5000 direct CHOCK and on track 145° to BRAAK and hold.
---------------	-----------	--

D-ATIS <b>127.575</b>	PHOENIX APP CON <b>128.65 353.9</b>	PHOENIX TOWER <b>118.7 278.8</b> (Rwy 8-26) <b>120.9 254.3</b> (Rwy 7L-25R, 7R-25L)	GND CON <b>119.75 269.2</b> (N) <b>132.55 269.2</b> (S)	CLNC DEL <b>118.1 269.2</b>	CPDLC
--------------------------	--	---	---	--------------------------------	-------



ELEV 1135	<b>D</b>	TDZE 1126
-----------	----------	-----------

<p>HIRL Rwy 8-26, 7L-25R and 7R-25L REIL Rwy 26</p>	1900	5000	CHOCK	tr 145°	BRAAK	VGSI and RNAV glidepath not coincident (VGSI Angle 3.00/TCH 66). HAMEK GIPSE TIPLE TEKUY 2.4 NM to RW25L 1.7 NM to RW25L RW25L 1940 3000 4000 258° 5000 GP 3.00° TCH 49
	1.7 NM	0.7 NM	3.3 NM	3.7 NM	3.6 NM	
	CATEGORY	A	B	C	D	
	LPV DA	1449-½ 323 (400-½)				
	LNAV/VNAV DA	1589-1 463 (500-1)			1674-1½ 548 (600-1½)	
LNAV MDA	1740-½ 614 (700-½)		1740-¾ 614 (700-¾)			
<b>C</b> CIRCLING	1740-1 605 (700-1)		2040-¾ 1205 (1300-¾)			

SW-4, 15 MAY 2025 to 12 JUN 2025

SW-4, 15 MAY 2025 to 12 JUN 2025