

(MOBIE4.MOBIE) 23334

MOBIE FOUR DEPARTURE

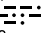
AL-322 (FAA)

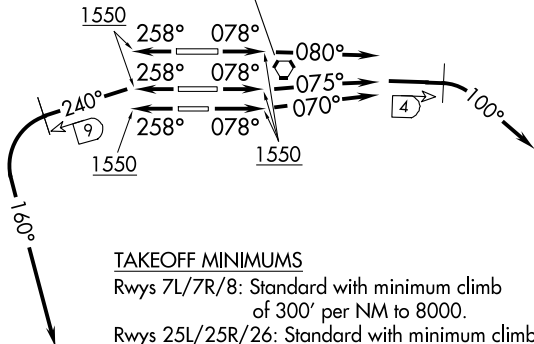
PHOENIX SKY HARBOR INTL (PHX)

PHOENIX, ARIZONA

PHOENIX DEP CON
 126.8 269.6
 D-ATIS
 127.575
 CLNC DEL
 118.1 269.2
 CPDLC
 GND CON
 119.75 269.2 (NORTH)
 132.55 269.2 (SOUTH)
 PHOENIX TOWER
 118.7 278.8 (Rwy 8-26)
 120.9 254.3 (Rwys 7L-25R, 7R-25L)

**TOP ALTITUDE:
8000**

PHOENIX
 115.6 PXR 
 Chan 103

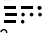


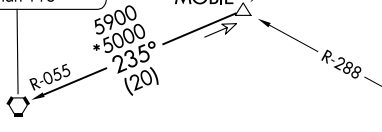
TAKEOFF MINIMUMS

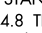
Rwys 7L/7R/8: Standard with minimum climb of 300' per NM to 8000.

Rwys 25L/25R/26: Standard with minimum climb of 350' per NM to 8000.

NOTE: Restricted to turbojet and turboprop aircraft only.
 NOTE: DME and RADAR required.

GILA BEND
 116.6 GBN 
 Chan 113



STANFIELD
 114.8 TFD 
 Chan 95

MOBIE

NOTE: Chart not to scale.

DEPARTURE ROUTE DESCRIPTION

TAKEOFF RUNWAY 8: Climb heading 078° to 1550, then climbing right turn heading 080°, at 4 DME east of PXR VORTAC, climbing right turn heading 100°. Thence. . .

TAKEOFF RUNWAY 7L: Climb heading 078° to 1550, then climbing left turn heading 075°, at 4 DME east of PXR VORTAC, climbing right turn heading 100°. Thence. . .

TAKEOFF RUNWAY 7R: Climb heading 078° to 1550, then climbing left turn heading 070°, at 4 DME east of PXR VORTAC, climbing right turn heading 100°. Thence. . .

TAKEOFF RUNWAY 25L: Climb heading 258° to 1550, then climbing left turn heading 240°, at 9 DME west of PXR VORTAC, climbing left turn heading 160°. Thence. . .

TAKEOFF RUNWAY 25R: Climb heading 258° to 1550, then climbing left turn heading 240°, at 9 DME west of PXR VORTAC, climbing left turn heading 160°. Thence. . .

TAKEOFF RUNWAY 26: Climb heading 258° to 1550, then climbing left turn heading 240°, at 9 DME west of PXR VORTAC, climbing left turn heading 160°. Thence. . .

. . . maintain 8000, expect RADAR vectors to MOBIE INT thence via (transition). Expect filed altitude 3 minutes after departure.

LOST COMMUNICATIONS: Expect filed altitude 3 minutes after departure.

GILA BEND TRANSITION (MOBIE4.GBN): From over MOBIE INT via GBN R-055 to GBN VORTAC.

MOBIE FOUR DEPARTURE

(MOBIE4.MOBIE) 25JUN15

PHOENIX, ARIZONA

PHOENIX SKY HARBOR INTL (PHX)

SW-4, 15 MAY 2025 to 12 JUN 2025

SW-4, 15 MAY 2025 to 12 JUN 2025