

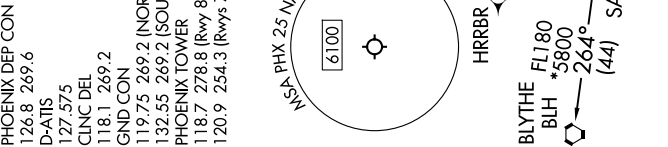
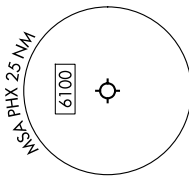
KEENS THREE DEPARTURE (RNAV)

AL-322 (FAA)

PHOENIX SKY HARBOR INTL (PHX)
PHOENIX, ARIZONA

TOP ALTITUDE: 8000

- PHOENIX DEP CON 126.8 269.6
- D-AIS 127.575
- CLNC DEL 118.1 269.2
- GND CON 119.75 269.2 (NORTH)
- 132.55 269.2 (SOUTH)
- PHOENIX TOWER 118.7 278.8 (Rwy 8-26)
- 120.9 254.3 (Rwys 7L-25R, 7R-25L)



DEPARTURE ROUTE DESCRIPTION

TAKEOFF RUNWAYS 7L/R, 8: Climb on heading 078° to 1635, then direct FUTEP, then on track 132° to AZCRD, then on track 199° to USEYE, then on track 264° to OAKLI, then on MASVE at/above 7000 and at/below 220K, then on track 264° to OAKLI, then on track 268° to KEENS, thence. . . .

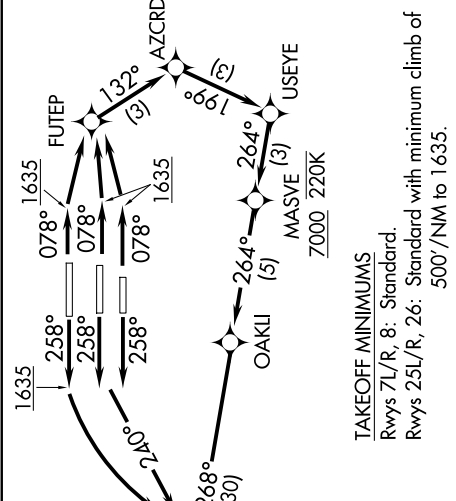
TAKEOFF RUNWAYS 25L/R: Climb on heading 258° to intercept course 240° to WULKO, then on track 268° to KEENS, thence. . . .

TAKEOFF RUNWAY 26: Climb on heading 258° to 1635, then left turn direct WULKO, then on track 268° to KEENS, thence. . . .

. . . on track 259° to IZZO, then on (transition). Maintain 8000, expect higher altitude 3 minutes after departure.

BLYTHE TRANSITION (KEENS3.BLH)
HRRBR TRANSITION (KEENS3.HRRBR)
WVLRN TRANSITION (KEENS3.WVLRN)

RNAV 1 - DME/DME/IRU or GPS required.
RADAR required.



TAKEOFF MINIMUMS
Rwys 7L/R, 8: Standard.
Rwys 25L/R, 26: Standard with minimum climb of 500'/NM to 1635.

- NOTE: Turbojets and turboprops only.
- NOTE: Aircraft requesting FL220 and below must file BLYTHE Transition.
- NOTE: Turbojets landing LAX, file WVLRN Transition.
- NOTE: Aircraft landing other than LAX and turboprops landing at LAX: Requesting FL240 and above, file HRRBR Transition.

NOTE: Chart not to scale.

KEENS THREE DEPARTURE (RNAV)