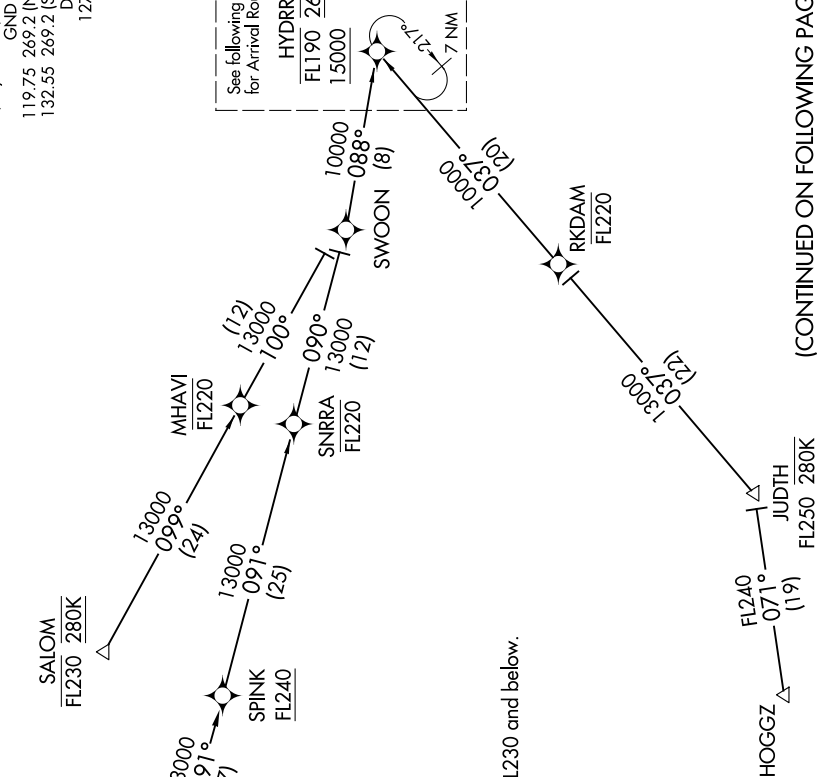


HYDRR ONE ARRIVAL (RNAV) Transition Routes

PHOENIX APP CON
124.1 256.9
PHOENIX TOWER
118.7 278.8 (Rwy 8-26)
120.9 254.3 (Rwy 7R-25L, 7L-25R)
GND CON
119.75 269.2 (North)
132.55 269.2 (South)
D-ATIS
127.575

See following page
for Arrival Routes.

HYDRR
FL190 265K
15000



(CONTINUED ON FOLLOWING PAGE)

SW-4, 15 MAY 2025 to 12 JUN 2025

- NOTE: RADAR required.
- NOTE: RNAV 1.
- NOTE: DME/DME/IRU or GPS required.
- NOTE: For turbojet aircraft only.
- NOTE: SALOM TRANSITION for aircraft FL230 and below.

NOTE: Chart not to scale.

BLYTHE TRANSITION (BLH.HYDRR1)
HOGGZ TRANSITION (HOGGZ.HYDRR1)
SALOM TRANSITION (SALOM.HYDRR1)

SW-4, 15 MAY 2025 to 12 JUN 2025

HYDRR ONE ARRIVAL (RNAV) Transition Routes