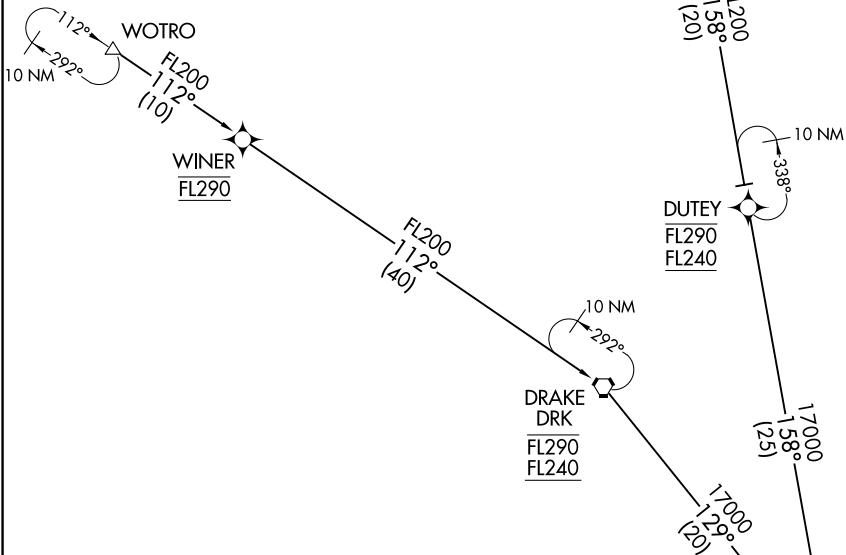


# BRUSR ONE ARRIVAL (RNAV) Transition Routes

PHOENIX APP CON  
128.65 353.9  
PHOENIX TOWER  
118.7 278.8 (Rwy 8-26)  
120.9 254.3 (Rwy 7L-25R, 7R-25L)  
GND CON  
119.75 269.2 (North)  
132.55 269.2 (South)  
D-ATIS  
127.575

- NOTE: RADAR required.
- NOTE: RNAV 1.
- NOTE: DME/DME/IRU or GPS required.
- NOTE: Turbojet aircraft only.
- NOTE: All Transitions: For non-GPS equipped aircraft landing east:  
TFD, BXK, and IWA DMEs must be operational.
- NOTE: TENTS Transition: For non-GPS equipped aircraft landing west:  
PXR and IWA DMEs must be operational.



(CONTINUED ON FOLLOWING PAGE)

NOTE: Chart not to scale.

TENTS TRANSITION (TENTS.BRUSR1)  
WOTRO TRANSITION (WOTRO.BRUSR1)

MAIER  
FL250 270K  
FL190  
See following page  
for Arrival Routes.

# BRUSR ONE ARRIVAL (RNAV) Transition Routes

SW-4, 15 MAY 2025 to 12 JUN 2025

SW-4, 15 MAY 2025 to 12 JUN 2025