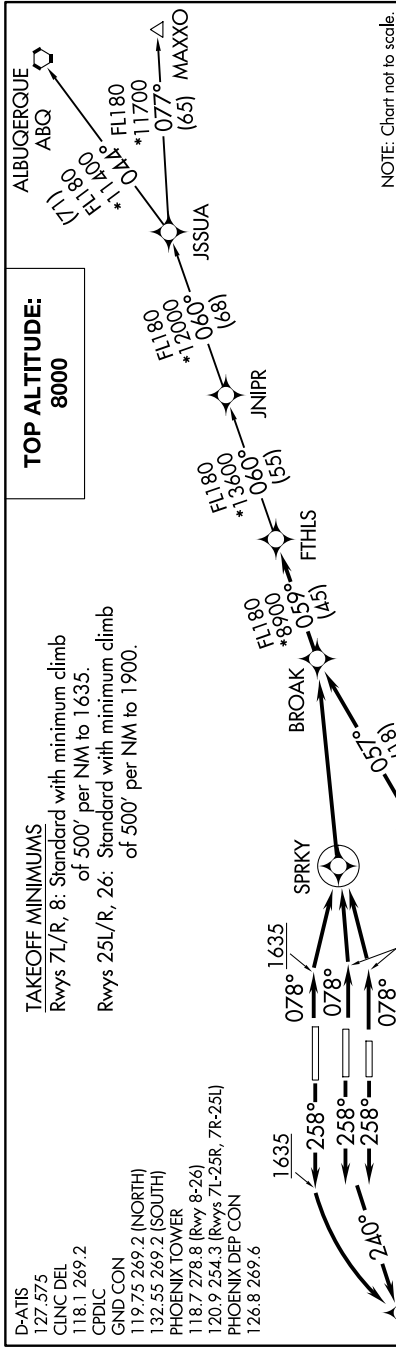


SW-4, 15 MAY 2025 to 12 JUN 2025



D-ATIS 127.575  
 CLNC DEL 118.1 269.2  
 CPDLC  
 GND CON 119.75 269.2 (NORTH)  
 132.55 269.2 (SOUTH)  
 PHOENIX TOWER 118.7 278.8 (Rwy 8-26)  
 120.9 254.3 (Rwys 7L-25R, 7R-25L)  
 PHOENIX DEP CON 126.8 269.6

BROAK ONE DEPARTURE (RNAV)

(BROAK1.BROAK) 24MAY18

**TOP ALTITUDE:**  
8000

**TAKEOFF MINIMUMS**  
 Rwys 7L/R, 8: Standard with minimum climb of 500' per NM to 1635.  
 Rwys 25L/R, 26: Standard with minimum climb of 500' per NM to 1900.

NOTE: Chart not to scale.

DEPARTURE ROUTE DESCRIPTION

TAKEOFF RUNWAYS 7L/R, 8: Climb heading 078° to 1635, then direct to SPRKY, then left turn direct BROAK. Thence. . . .  
 TAKEOFF RUNWAYS 25L/R: Climb heading 258° to intercept course 240° to JUTAK, then on track 151° to WETAL, then on track 123° to RIICH, then on track 070° to PYPPE, then on track 050° to BARLL, then on track 057° to BROAK. Thence. . . .  
 TAKEOFF RUNWAY 26: Climb heading 258° to 1635, then left turn direct JUTAK, then on track 151° to WETAL, then on track 123° to RIICH, then on track 070° to PYPPE, then on track 050° to BARLL, then on track 057° to BROAK. Thence. . . .  
 . . . on track 059° to FTHLS, then on (transition). Maintain 8000, expect higher altitude 3 minutes after departure.  
 ALBUQUERQUE TRANSITION (BROAK1.ABQ)  
 JNIPR TRANSITION (BROAK1.JNIPR)  
 MAXXO TRANSITION (BROAK1.MAXXO)



N

NOTE: RNAV 1.  
 NOTE: Turbojets and turboprops only.  
 NOTE: RADAR required.  
 NOTE: DME/DME/IRU or GPS required.  
 NOTE: ABQ transition ATC assigned only.  
 NOTE: Aircraft filing over ACH, LBL, ONM, CNX, PNH, MMB, TCC, IRW and TXO file BROAK DEPARTURE.  
 NOTE: Aircraft filing over ABQ, CIM, FTI, and GCK file FORPE DEPARTURE.  
 NOTE: Aircraft filing over DEN, RSK, ALS, and points north of ALS file MRBIL DEPARTURE.  
 NOTE: For non-GPS equipped aircraft, PXR and TFD DMEs must be operational.

SW-4, 15 MAY 2025 to 12 JUN 2025