

# BALDY THREE DEPARTURE

AL-322 (FAA)

PHOENIX SKY HARBOR INTL (PHX)  
PHOENIX, ARIZONA

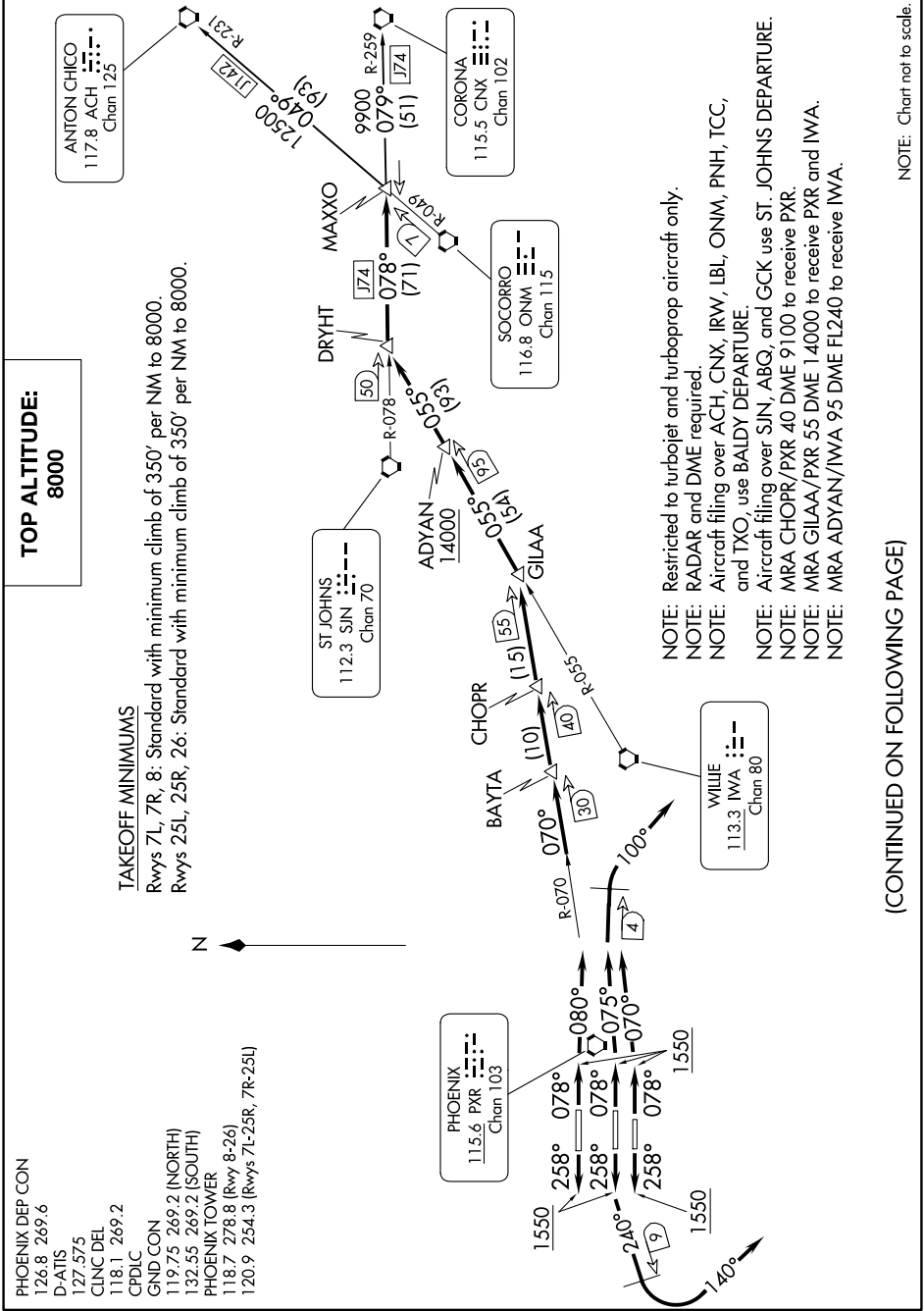
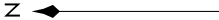
SW-4, 15 MAY 2025 to 12 JUN 2025

- PHOENIX DEP CON  
126.8 269.6  
D-ATIS  
127.575  
CLNC DEL  
118.1 269.2  
CPDLC  
GND CON  
119.75 269.2 (NORTH)  
132.55 269.2 (SOUTH)  
PHOENIX TOWER  
118.7 278.8 (Rwy 8-26)  
120.9 254.3 (Rwys 7L-25R, 7R-25L)

**TOP ALTITUDE:  
8000**

### TAKEOFF MINIMUMS

Rwys 7L, 7R, 8: Standard with minimum climb of 350' per NM to 8000.  
Rwys 25L, 25R, 26: Standard with minimum climb of 350' per NM to 8000.



- NOTE: Restricted to turbojet and turboprop aircraft only.
- NOTE: RADAR and DME required.
- NOTE: Aircraft filing over ACH, CNX, IRW, LBL, ONM, PNH, TCC, and TXO, use BALDY DEPARTURE.
- NOTE: Aircraft filing over SJN, ABG, and GCK use ST. JOHNS DEPARTURE.
- NOTE: MRA CHOPR/PXR 40 DME 9100 to receive PXR.
- NOTE: MRA GILAA/PXR 55 DME 14000 to receive PXR and IWA.
- NOTE: MRA ADYAN/IWA 95 DME 12400 to receive IWA.

(CONTINUED ON FOLLOWING PAGE)

NOTE: Chart not to scale.

SW-4, 15 MAY 2025 to 12 JUN 2025

# BALDY THREE DEPARTURE