

# NORDY-ONE DEPARTURE (NORDY1.NORDY)

[USAF]

LUKE AFB (KLUF)

GLENDALE, ARIZONA

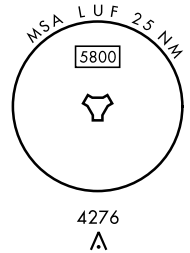
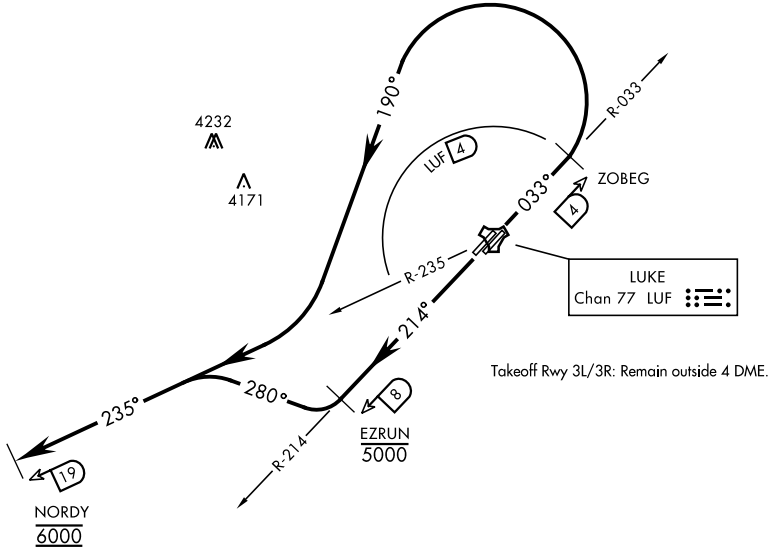
ATIS ★ 134.925 269.85  
 CLNC DEL ★  
 126.25 273.475  
 GND CON ★  
 133.175 335.8  
 TOWER ★  
 119.1 379.9  
 DEP CON ★  
 118.15 363.125

RADAR required

Rwy	Knots	60	120	180	240	300	360
3L/R (C)	V/V(fpm)	370	740	1110	1480	1850	2220
21L/R (B)	V/V(fpm)	280	560	840	1120	1400	1680

Minimum Climb Rate

- (C) Climb to 6000
- (B) Climb to 5000



SW-4, 15 MAY 2025 to 12 JUN 2025

SW-4, 15 MAY 2025 to 12 JUN 2025



## DEPARTURE ROUTE DESCRIPTION

**TAKEOFF RWY 3L/R:** Climb on heading 033° to 6000. Abeam ZOBEG turn left heading 190° to intercept LUF TACAN R-235 and proceed outbound to NORDY. Remain outside LUF 4 DME. Maintain 6000 until NORDY or as assigned by ATC.

**TAKEOFF RWY 21L/R:** Climb on heading 214° to 5000. Abeam EZRUN turn right heading 280° to intercept LUF TACAN R-235 and proceed outbound to NORDY. Climb and maintain 6000 until NORDY or as assigned by ATC.

# NORDY-ONE DEPARTURE (NORDY1.NORDY)

Amdt 2 25JAN24

GLENDALE, ARIZONA

LUKE AFB (KLUF)