

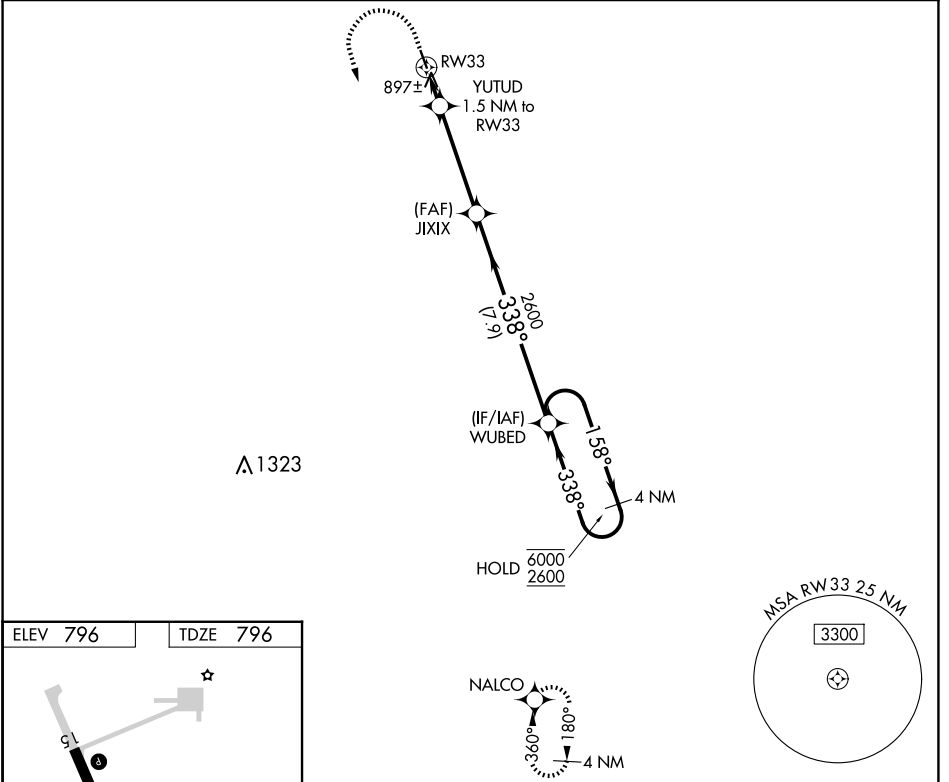
APP CRS	Rwy Idg	3798
338°	TDZE	796
	Apt Elev	796

RNAV (GPS) RWY 33

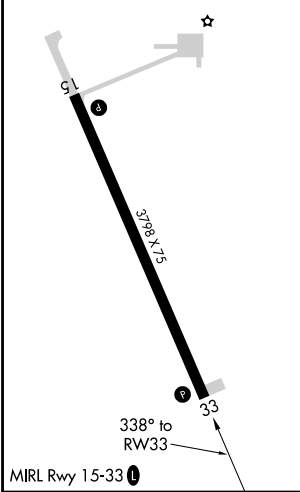
PEMBINA MUNI (PMB)

RNP APCH-GPS.		MISSED APPROACH: Climb to 1200 then climbing left turn 2600 direct NALCO and hold.
<p>⚠ Circling Rwy 15 NA at night. Obtain local altimeter setting on CTAF; when not received, use Hallock altimeter setting and increase all MDA 60 feet and LNAV Cat C visibility $\frac{1}{4}$ SM.</p>		

MINNEAPOLIS CENTER 132.15 269.6	UNICOM 122.8 (CTAF) 0
---	---------------------------------



ELEV 796	TDZE 796
----------	----------



<p>1200</p> <p>2600</p> <p>NALCO</p> <p>VGSI and descent angles not coincident (VGSI Angle 3.00/TCH 26).</p>	<p>JIXIX</p> <p>WUBED</p> <p>4 NM Holding Pattern</p>															
<p>YUTUD 1.5 NM to RW33</p> <p>3.00° TCH 40</p> <p>1320</p> <p>1.5</p> <p>4.1 NM</p> <p>7.9 NM</p>	<p>6000</p> <p>2600</p> <p>338°</p> <p>158°</p>															
<table border="1"> <tr> <th>CATEGORY</th> <th>A</th> <th>B</th> <th>C</th> <th>D</th> </tr> <tr> <td>LNAV MDA</td> <td colspan="3">1160-1 364 (400-1)</td> <td>NA</td> </tr> <tr> <td>C CIRCLING</td> <td>1200-1 404 (500-1)</td> <td>1260-1 464 (500-1)</td> <td>1260-1½ 464 (500-1½)</td> <td>NA</td> </tr> </table>	CATEGORY	A	B	C	D	LNAV MDA	1160-1 364 (400-1)			NA	C CIRCLING	1200-1 404 (500-1)	1260-1 464 (500-1)	1260-1½ 464 (500-1½)	NA	
CATEGORY	A	B	C	D												
LNAV MDA	1160-1 364 (400-1)			NA												
C CIRCLING	1200-1 404 (500-1)	1260-1 464 (500-1)	1260-1½ 464 (500-1½)	NA												

NC-1, 15 MAY 2025 to 12 JUN 2025

NC-1, 15 MAY 2025 to 12 JUN 2025