

PATUXENT RIVER, MARYLAND

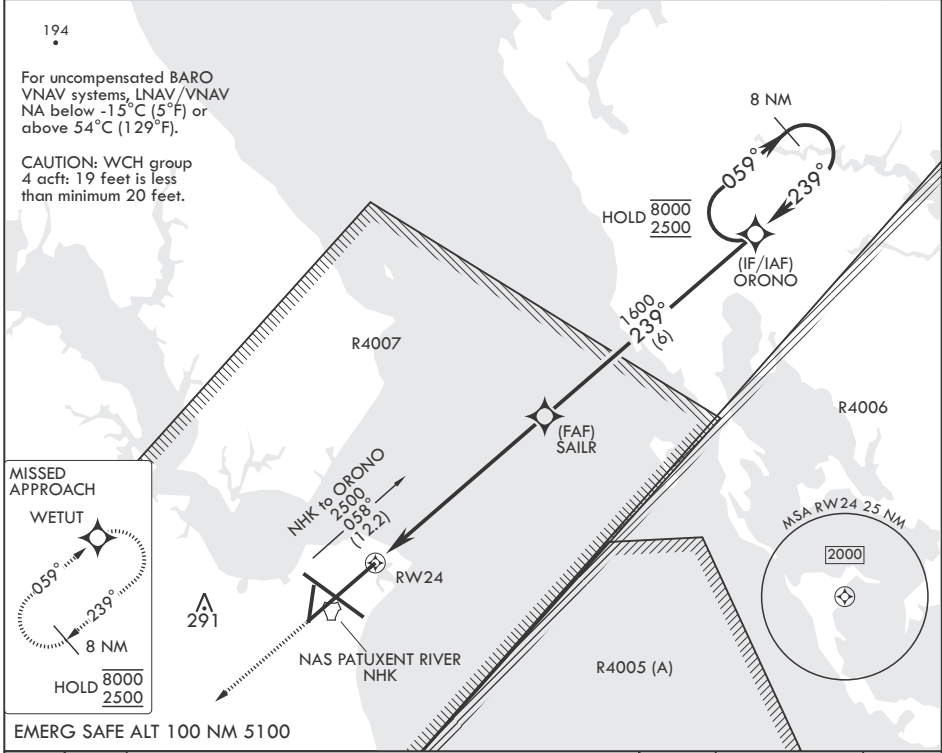
# RNAV (GPS) RWY 24

APCH CRS <b>239°</b>	Rwy Idg <b>11,799</b>
	TDZE <b>20</b>
	Arprt Elev <b>39</b>

- (USN) PATUXENT RIVER NAS (TRAPNELL FLD) (KNHK)

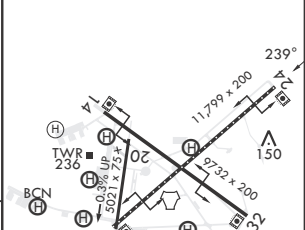
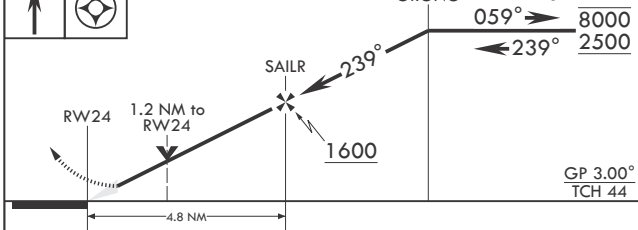
RNP APCH	MISSED APPROACH: Climb to 2500 direct WETUT and hold.
----------	---

ATIS <b>322.425</b>	APP CON/DEP CON* <b>121.0 250.3</b>	TOWER <b>123.7 343.65</b>	GND CON <b>120.6 336.4</b>	CLNC DEL <b>135.2 316.125</b>	ASR/PAR
------------------------	--	------------------------------	-------------------------------	----------------------------------	---------



2500 WETUT	ORONO Holding Pattern
------------	-----------------------

ELEV 39	TDZE 20
---------	---------



CATEGORY	A	B	C	D	E
LNAV/VNAV DA	308- <sup>7</sup> / <sub>8</sub> 288 (300- <sup>7</sup> / <sub>8</sub> )	319- <sup>7</sup> / <sub>8</sub> 299 (300- <sup>7</sup> / <sub>8</sub> )	327- <sup>7</sup> / <sub>8</sub> 307 (300- <sup>7</sup> / <sub>8</sub> )	338- <sup>7</sup> / <sub>8</sub>	318 (300- <sup>7</sup> / <sub>8</sub> )
LNAV MDA	440-1	420 (500-1)	440-1 <sup>1</sup> / <sub>2</sub>	420	(500-1 <sup>1</sup> / <sub>2</sub> )
CIRCLING	540-1 501 (600-1)	560-1 521 (600-1)	620-1 <sup>1</sup> / <sub>2</sub> 581 (600-1 <sup>1</sup> / <sub>2</sub> )	680-2 641 (700-2)	820-2 <sup>3</sup> / <sub>4</sub> 781 (800-2 <sup>3</sup> / <sub>4</sub> )



PATUXENT RIVER, MARYLAND  
Amdt 3 07SEP23

38°17'N - 76°25'W PATUXENT RIVER NAS (TRAPNELL FLD) (KNHK)

# RNAV (GPS) RWY 24

NE-3, 15 MAY 2025 to 12 JUN 2025

NE-3, 15 MAY 2025 to 12 JUN 2025