

PANAMA CITY, FLORIDA

TACAN Z RWY 32R

TACAN PAM Chan 64	APCH CRS 326°	Rwy Idg 10,008 TDZE 14 Arpt Elev 17
-----------------------------	-------------------------	----------------------------------------------------------------

[USAF]

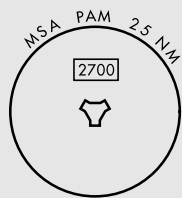
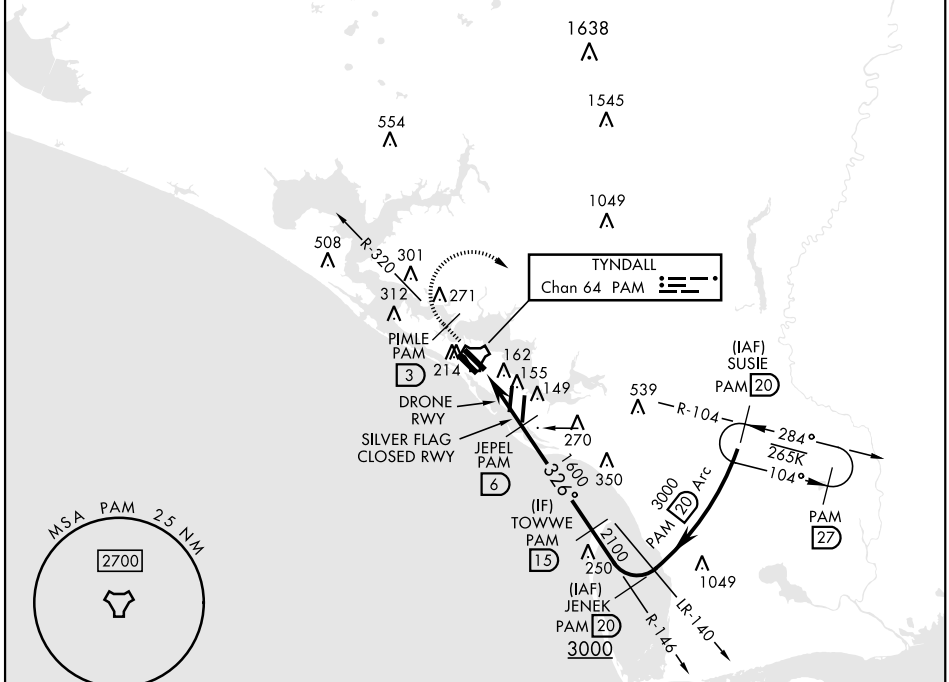
TYNDALL AFB (KPAM)

▼ *When ALS inop, increase CAT AB RVR to 55, vis to 1 mile; CAT CDE vis to 1 3/8 miles.

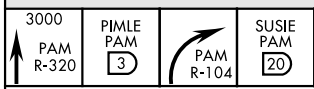


MISSED APPROACH: Track outbound PAM TACAN R-320 to 3 DME (PIMLE), then turn right to join PAM R-104 to 20 DME (SUSIE) and hold. Maintain 3000.

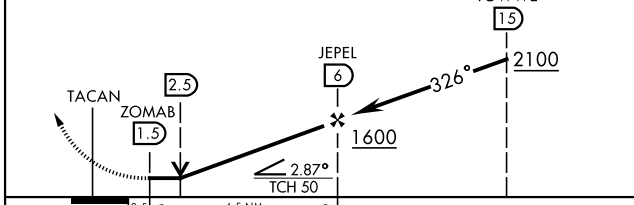
ATIS ★ 254.4	APP CON 125.2 392.1 (N abv 5000') 120.825 379.3 (N blw 5000') 124.15 338.35 (S abv 5000') 119.775 317.45 (S blw 5000')	TOWER★ 133.95 263.15	GND CON 121.9 259.3	CLNC DEL 118.05 348.7	ASR/PAR 318'
------------------------	----------------------------------------------------------------------------------------------------------------------------------------------------------------	--------------------------------	-------------------------------	---------------------------------	-----------------



EMERG SAFE ALT 100 NM 3300

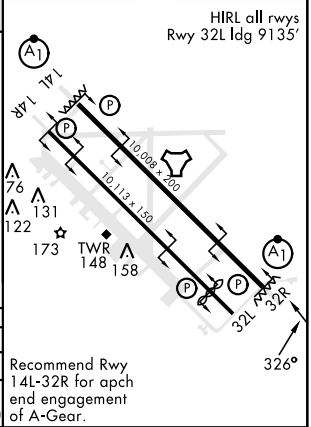


VGSI and descent angles not coincident (VGSI Angle 2.50/TCH 50).



CATEGORY	A	B	C	D	E
S-32R*	480/24	466 (500-1/2)	480/50	466 (500-1)	
CIRCLING	540-1	523 (600-1)	540-1 1/2	580-2	620-2 1/4
			523 (600-1 1/2)	563 (600-2)	603 (700-2 1/4)

ELEV 17	TDZE 14
---------	---------



Recommend Rwy 14L-32R for apch end engagement of A-Gear.

PANAMA CITY, FLORIDA
Amdt 4 12AUG21

30°04'N-85°34'W

TYNDALL AFB (KPAM)

TACAN Z RWY 32R

SE-3, 15 MAY 2025 to 12 JUN 2025

SE-3, 15 MAY 2025 to 12 JUN 2025