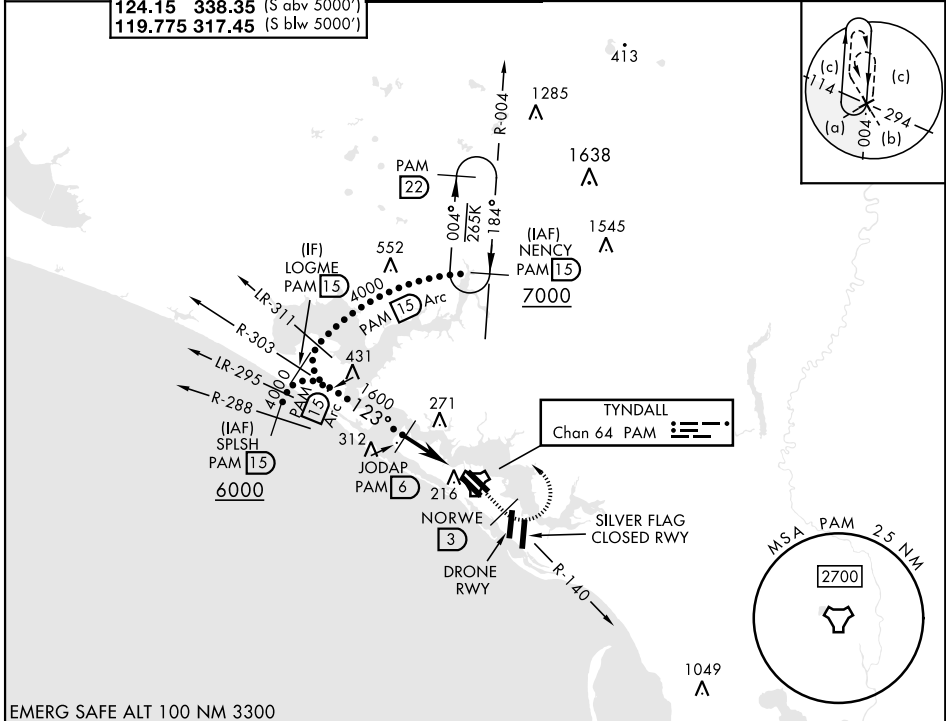


HI-TACAN Y RWY 14R

TACAN PAM Chan 64	APCH CRS 123°	Rwy Idg 10,113 TDZE 15 Arprt Elev 17	[USAF]	TYNDALL AFB (KPAM)
-----------------------------	-------------------------	---	--------	--------------------

MISSED APPROACH: Track outbound PAM TACAN R-140 to 3 DME (NORWE), then turn left to join PAM R-004 to 15 DME (NENCY) and hold. Maintain 3000.

ATIS ★ 254.4	APP CON 125.2 392.1 (N abv 5000') 120.825 379.3 (N blw 5000') 124.15 338.35 (S abv 5000') 119.775 317.45 (S blw 5000')	TOWER ★ 133.95 263.15	GND CON 121.9 259.3	CLNC DEL 118.05 348.7	ASR/PAR
------------------------	--	--	--------------------------------------	--	---------



EMERG SAFE ALT 100 NM 3300

	3000 PAM R-140 NORWE PAM 3 NENCY PAM 15	ELEV 17 TDZE 15 HIRL all Rwys Rwy 32L Idg 9135'	
	VGSIs and descent angles not coincident (VGSIs Angle 2.50/TCH 36).		
CATEGORY	C	D	E
S-14R	480-1 $\frac{3}{8}$	465 (500-1 $\frac{3}{8}$)	
CIRCLING	540-1 $\frac{1}{2}$ 523 (600-1 $\frac{1}{2}$)	580-2 563 (600-2)	620-2 $\frac{1}{4}$ 603 (700-2 $\frac{1}{4}$)
Recommend Rwy 14L-32R for apch end engagement of A-Gear.			

HI-TACAN Y RWY 14R

SE-3, 15 MAY 2025 to 12 JUN 2025

SE-3, 15 MAY 2025 to 12 JUN 2025