

VORTAC PSX 117.3 Chan 120	APP CRS 120°	Rwy Idg TDZE 13 Apt Elev 14	5001
---	------------------------	---	-------------

VOR RWY 13

PALACIOS MUNI (PSX)

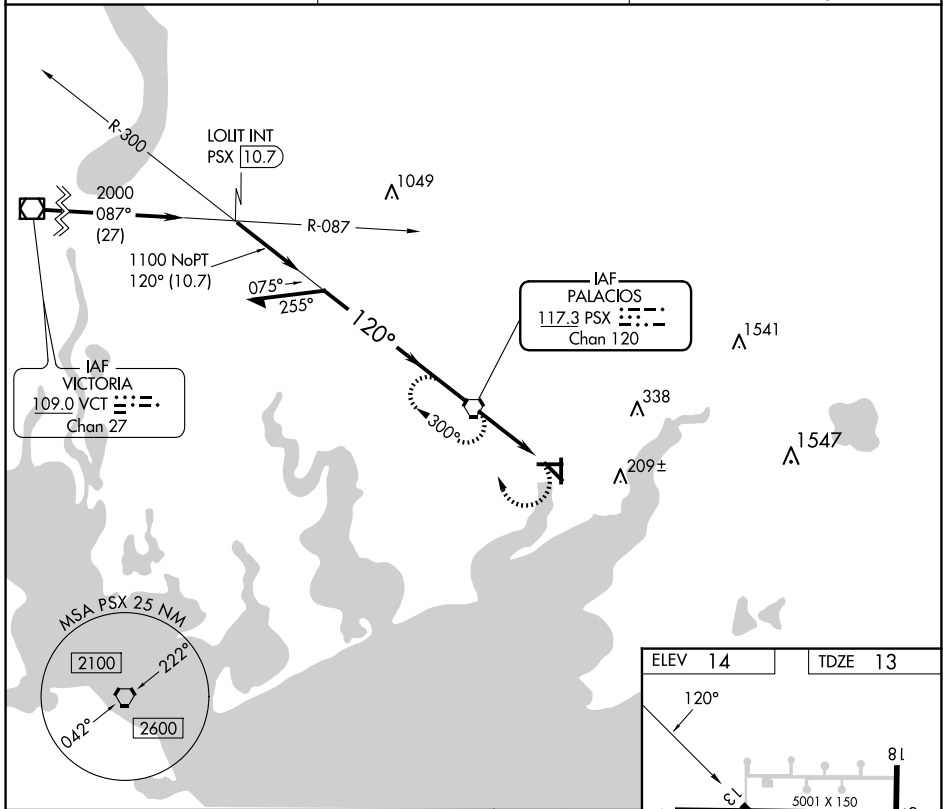
⚠ When local altimeter setting not received, use Port Lavaca altimeter setting: increase all MDA's 60 feet and S-13 Cat C/D and Circling Cat C/D visibility ¼ SM. Rwy 13 helicopter visibility reduction below ¾ SM NA. Circling Rwy 8, 18, 26, 31, 36 NA at night.

MISSED APPROACH: Climbing right turn to 2000 direct PSX VORTAC and hold.

ASOS
118.025

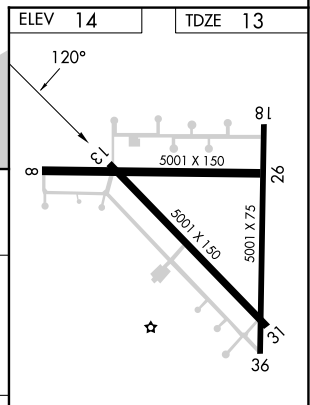
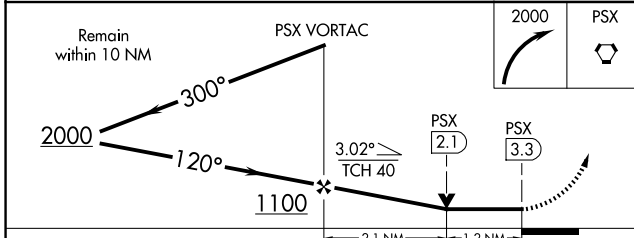
HOUSTON CENTER
135.05 353.6

UNICOM
122.8 (CTAF) 0



SC-5, 15 MAY 2025 to 12 JUN 2025

SC-5, 15 MAY 2025 to 12 JUN 2025



CATEGORY	A	B	C	D
S-13	380-1	367 (400-1)		380-1¼ 367 (400-1¼)
CIRCLING	460-1 446 (500-1)	480-1 466 (500-1)	560-1½ 546 (600-1½)	700-2¼ 686 (700-2¼)

ELEV	14	TDZE	13		
REIL Rwys 13 and 31					
MIRL Rwy 13-31					
	FAF to MAP 3.3 NM				
Knots	60	90	120	150	180
Min:Sec	3:18	2:12	1:39	1:19	1:06