


APP CRS	Rwy Idg	<b>8153</b>
<b>358°</b>	TDZE	<b>979</b>
	Apt Elev	<b>985</b>

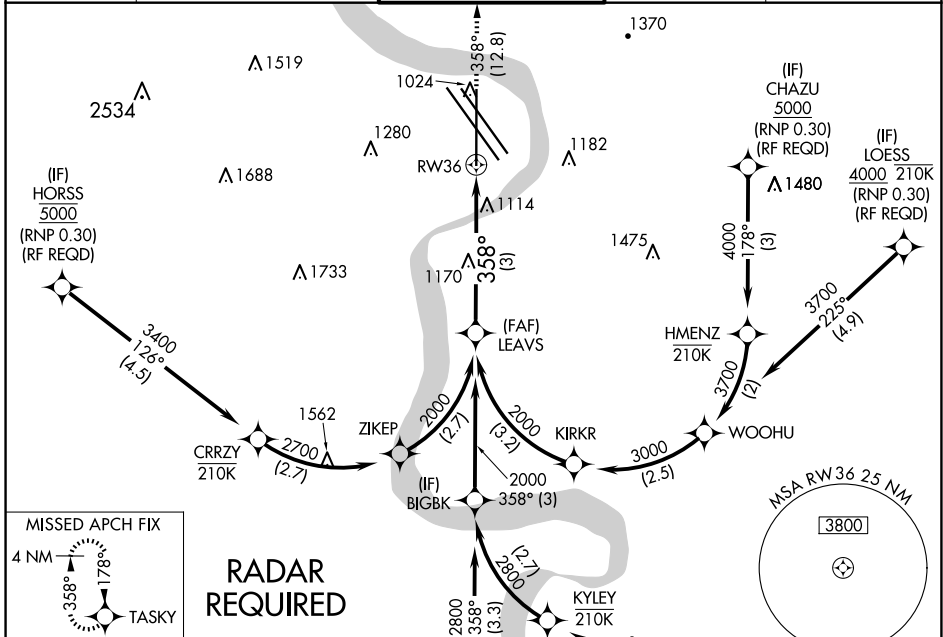
# RNAV (RNP) Z RWY 36

EPPLEY AIRFIELD (OMA)

**▼** For uncompensated Baro-VNAV systems, procedure NA below -19°C (-2°F) or above 54°C (130°F). When VGSI inop, procedure NA at night. For inop ALS, increase RNP 0.30 all Cats visibility to 1½ SM. GPS required.

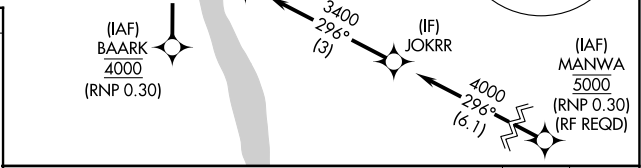
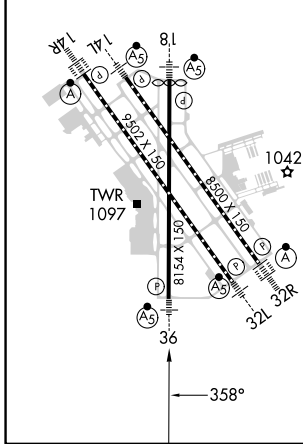
MALSR  MISSED APPROACH: Climb to 3000 on track 358° to TASKY and hold.


D-ATIS <b>120.4</b>	OMAHA APP CON <b>135.875 354.05</b>	OMAHA TOWER <b>132.1 256.9</b>	GND CON <b>121.9</b>	CLNC DEL <b>119.9</b>
------------------------	--	-----------------------------------	-------------------------	--------------------------



ELEV 985	<b>D</b>	TDZE 979
----------	----------	----------

HIRL all Rwys  
TDZ/CL Rwys 14R and 32R



LEAVS	See planview for multiple IF locations.	3000	TASKY
2000		↑	
2000		tr 358°	
GP 3.00°			
TCH 58			
		3 NM	

CATEGORY	A	B	C	D
RNP 0.30 DA	1425-1		446 (500-1)	

**AUTHORIZATION REQUIRED**

NC-2, 15 MAY 2025 to 12 JUN 2025

NC-2, 15 MAY 2025 to 12 JUN 2025