

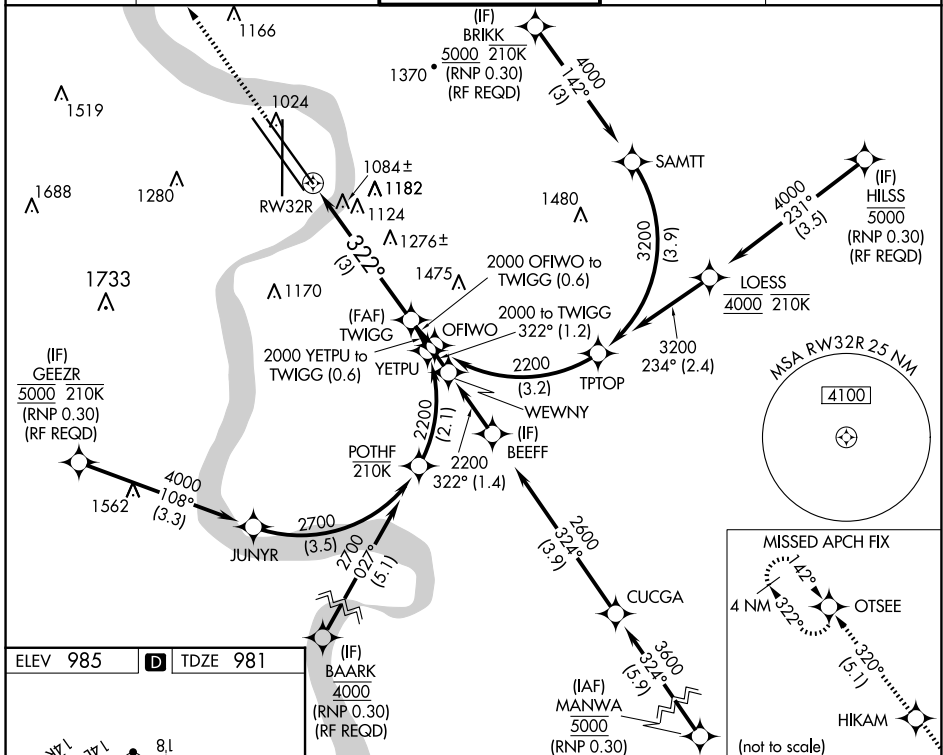
RNAV (RNP) Z RWY 32R

EPPLEY AIRFIELD (OMA)

APP CRS 322°	Rwy Idg 8500
	TDZE 981
	Apt Elev 985

RNP AR APCH. RF required.	ALSF-2 	MISSED APPROACH: Climb to 3300 direct HIKAM and track 320° to OTSEE and hold.
<p>▼ For uncompensated Baro-VNAV systems, procedure NA below -19°C or above 54°C. For inop ALS, increase RNP 0.30 all Cats visibility to 1 1/2 SM.</p>		

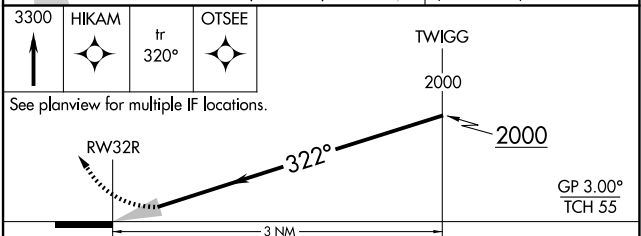
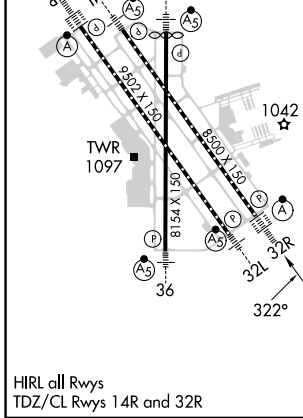
D-ATIS 120.4	OMAHA APP CON 135.875 354.05	OMAHA TOWER 132.1 256.9	GND CON 121.9	CLNC DEL 119.9
------------------------	--	-----------------------------------	-------------------------	--------------------------



NC-2, 15 MAY 2025 to 12 JUN 2025

NC-2, 15 MAY 2025 to 12 JUN 2025

ELEV 985	D	TDZE 981
----------	----------	----------



CATEGORY	A	B	C	D
RNP 0.11 DA		1313/26	332 (400-1/2)	
RNP 0.15 DA		1407/40	426 (500-3/4)	
RNP 0.30 DA		1607-1 3/8	626 (700-1 1/8)	

AUTHORIZATION REQUIRED