


APP CRS 142°	Rwy Idg 8500
	TDZE 984
	Apt Elev 985

RNAV (RNP) Z RWY 14L

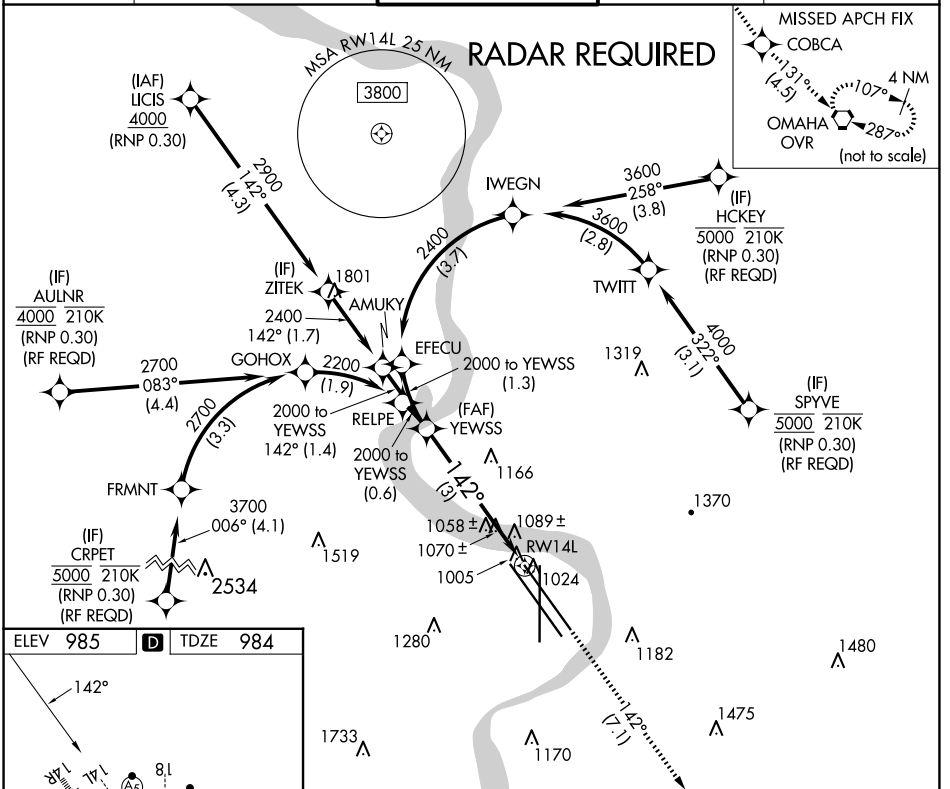
EPPLEY AIRFIELD (OMA)

▽ For uncompensated Baro-VNAV systems, procedure NA below -17°C (2°F) or above 54°C (130°F). For inoperative ALS, increase RNP 0.15 all Cats visibility to 1½ and RNP 0.30 all Cats visibility to 1¾. GPS required.

MALSRL


MISSED APPROACH: Climb to 3000 on track 142° to COBCA and on track 131° to OVR VORTAC and hold.

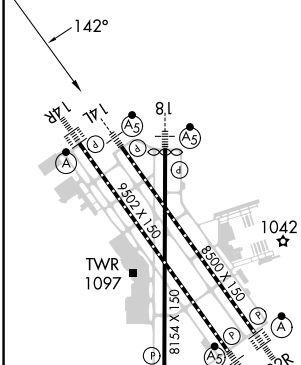
D-ATIS 120.4	OMAHA APP CON 135.875 354.05	OMAHA TOWER 132.1 256.9	GND CON 121.9	CLNC DEL 119.9
------------------------	--	-----------------------------------	-------------------------	--------------------------



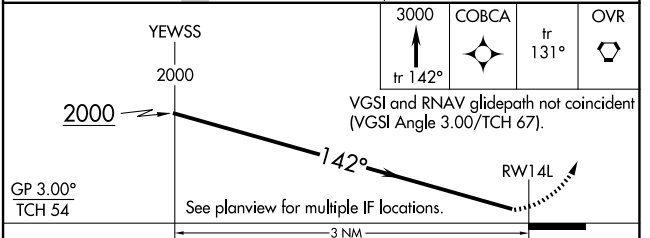
NC-2, 15 MAY 2025 to 12 JUN 2025

NC-2, 15 MAY 2025 to 12 JUN 2025

ELEV 985	D	TDZE 984
----------	----------	----------



HIRL all Rwys
TDZ/CL Rwys 14R and 32R



CATEGORY	A	B	C	D
RNP 0.15 DA		1335/40	351 (400-¾)	
RNP 0.30 DA		1395/45	411 (500-¾)	

AUTHORIZATION REQUIRED