

OKLAHOMA CITY, OKLAHOMA

RNAV (GPS) RWY 18

APCH CRS	Rwy Idg	11,100
176°	THRE	1260
	Arprt Elev	1291

(USAF)

TINKER AFB (KTIK)

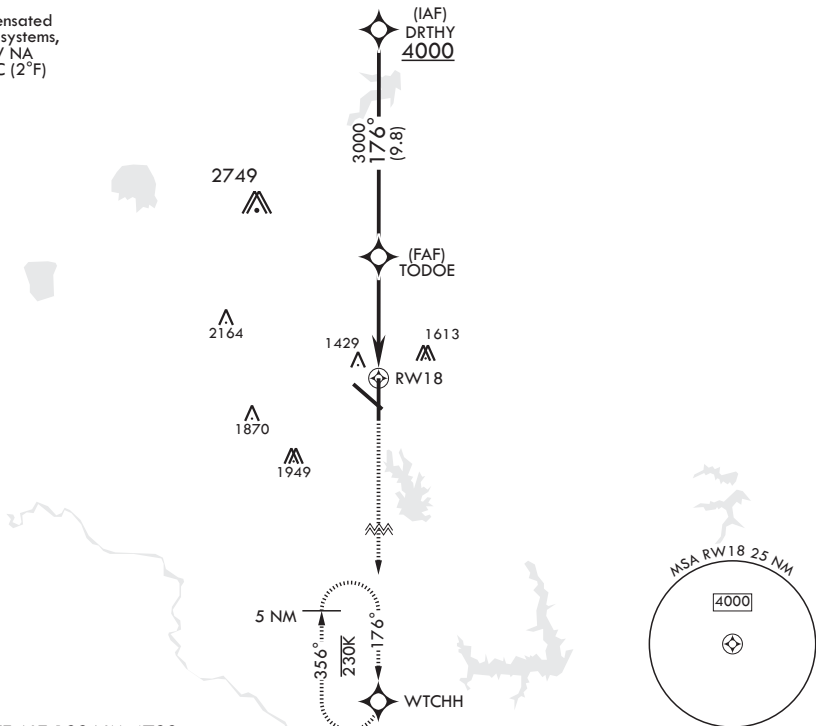
⚠ * Cat E Circling not authorized in sector S of Rwy 13-31 and W of Rwy 18-36.

A2 MISSED APPROACH: Climb to 4000 direct WTCHH waypoint and hold.

ATIS★	OKE CITY APP CON/DEP CON	TOWER	GND CON	CLNC DEL	ASR
270.1	124.2 336.4	124.45 251.05	121.8 275.8	119.7 335.8	

DME/DME RNP-0.3 NA

For uncompensated Baro-VNAV systems, LNAV/VNAV NA below -17°C (2°F)



EMERG SAFE ALT 100 NM 4700

<p>DRTHY 4000</p> <p>176°</p> <p>TODOE</p> <p>3000</p> <p>GP 3.00° TCH 50</p>		<p>VGSI and descent angles not coincident.</p> <p>4000 WTCHH</p> <p>ELEV 1291</p>		<p>THRE 1260</p> <p>176°</p> <p>1340 1356 1342 TWR</p> <p>10,000 x 200 0.5% UP</p> <p>11,100 x 200 -0.3% UP</p> <p>BCN 1430</p> <p>1376</p> <p>1441 1384 1425 36 (A1)</p> <p>HIRL all Rwys</p>																									
<p>1.4 NM to RWY 18</p> <p>5.2 NM</p>		<table border="1"> <thead> <tr> <th>CATEGORY</th> <th>A</th> <th>B</th> <th>C</th> <th>D</th> <th>E</th> </tr> </thead> <tbody> <tr> <td>LNAV/VNAV DA</td> <td colspan="2">1720-1¼</td> <td>460</td> <td colspan="2">(500-1¼)</td> </tr> <tr> <td>LNAV MDA</td> <td>1720/40</td> <td>460 (500-¾)</td> <td>1720/55</td> <td>460</td> <td>(500-1)</td> </tr> <tr> <td>C CIRCLING*</td> <td colspan="2">1820-1 529 (600-1)</td> <td>2000-2 709 (800-2)</td> <td>2040-2½ 749 (800-2½)</td> <td>2040-2¾ 749 (800-2¾)</td> </tr> </tbody> </table>				CATEGORY	A	B	C	D	E	LNAV/VNAV DA	1720-1¼		460	(500-1¼)		LNAV MDA	1720/40	460 (500-¾)	1720/55	460	(500-1)	C CIRCLING*	1820-1 529 (600-1)		2000-2 709 (800-2)	2040-2½ 749 (800-2½)	2040-2¾ 749 (800-2¾)
CATEGORY	A	B	C	D	E																								
LNAV/VNAV DA	1720-1¼		460	(500-1¼)																									
LNAV MDA	1720/40	460 (500-¾)	1720/55	460	(500-1)																								
C CIRCLING*	1820-1 529 (600-1)		2000-2 709 (800-2)	2040-2½ 749 (800-2½)	2040-2¾ 749 (800-2¾)																								

OKLAHOMA CITY, OKLAHOMA

35°25'N - 97°23'W

TINKER AFB (KTIK)

Orig 13JUN24

RNAV (GPS) RWY 18

SC-1, 15 MAY 2025 to 12 JUN 2025

SC-1, 15 MAY 2025 to 12 JUN 2025