

HI-TACAN Y RWY 18

TACAN TIK Chan 105	APCH CRS 176°	Rwy Idg 11,100 TDZE 1267 Arprt Elev 1291
------------------------------	-------------------------	---

AL-299 [USAF]

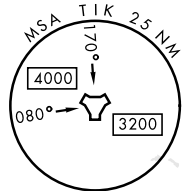
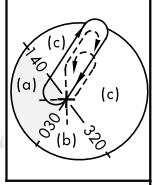
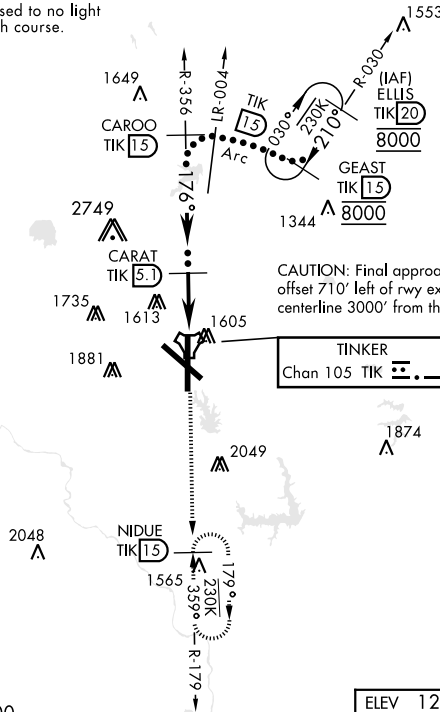
TINKER AFB (KTIK)

* CAT E circling not authorized in sector S of Rwy 13-31. Circling not authorized to Rwy 18. SALS
† MISSED APPROACH: Climb to 4000 on TIK TACAN R-179 to NIDUE and hold.

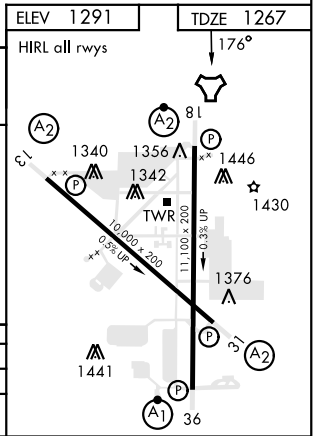
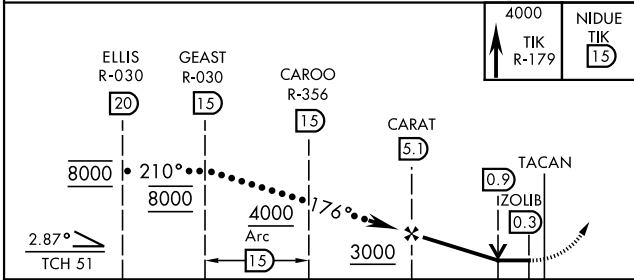
ATIS ★ 270.1	OKE CITY APP CON 124.2 336.4	TOWER 124.45 251.05	GND CON 121.8 275.8	CLNC DEL 119.7 335.8	ASR
------------------------	--	-------------------------------	-------------------------------	--------------------------------	-----

† Missed approach requires use of RNAV or ATC monitoring.

Straight-in minimum visibility increased to no light minimum due to offset final approach course.



EMERG SAFE ALT 100 NM 4700



CATEGORY	C	D	E
S-18	1720-1 $\frac{3}{8}$	453	(500-1 $\frac{3}{8}$)
CIRCLING *	1960-1 $\frac{3}{4}$ 669 (700-1 $\frac{3}{4}$)	1960-2 669 (700-2)	1960-2 $\frac{1}{4}$ 669 (700-2 $\frac{1}{4}$)

OKLAHOMA CITY, OKLAHOMA

35°25'N-97°23'W

TINKER AFB (KTIK)

Amtd 5 20APR23

HI-TACAN Y RWY 18

SC-1, 15 MAY 2025 to 12 JUN 2025

SC-1, 15 MAY 2025 to 12 JUN 2025