

OKLAHOMA CITY, OKLAHOMA

# HI-ILS or LOC/DME Y RWY 18

LOC I-FRJ <b>111.3</b>	APCH CRS <b>177°</b>	Rwy ldg <b>11,100</b> TDZE <b>1267</b> Arprt Elev <b>1291</b>
---------------------------	-------------------------	---

[USAF]

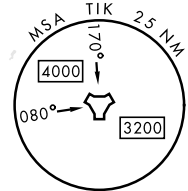
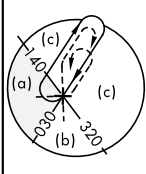
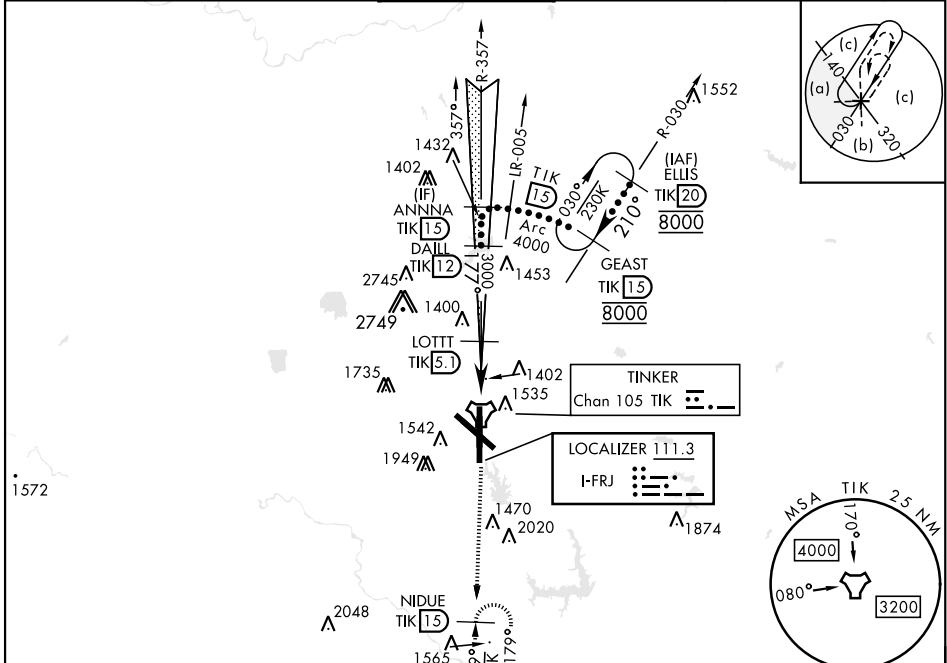
TINKER AFB (KTIK)

▼ \* When ALS inop, increase CAT CDE RVR to 55 and vis to 1 mile.  
 \*\* CAT E circling NA in sector S of Rwy 13-31 and W of RWY 18. Circling NA to Rwy 18.

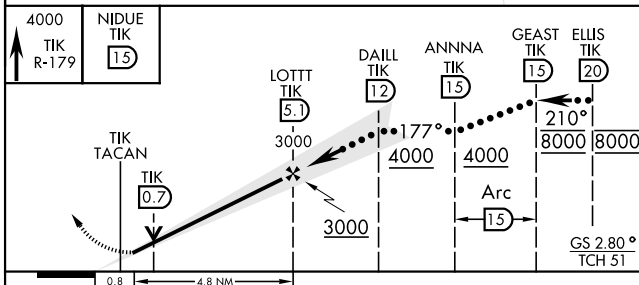


MISSED APPROACH: Climb to 4000 on TIK TACAN R-179 to NIDUE and hold.

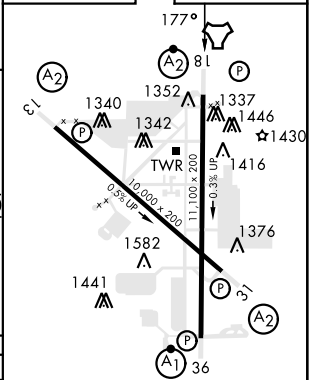
ATIS ★ <b>270.1</b>	OKE CITY APP CON <b>124.2 336.4</b>	TOWER <b>124.45 251.05</b>	GND CON <b>121.8 275.8</b>	CLNC DEL <b>119.7 335.8</b>	ASR
------------------------	--	-------------------------------	-------------------------------	--------------------------------	-----



Localizer unusable within 0.4 NM from threshold.  
 Localizer NA beyond 15° right of course.  
 EMERG SAFE ALT 100 NM 4700



ELEV 1291	TDZE 1267
-----------	-----------



CATEGORY	C	D	E
S-ILS 18	1467/40	200 (200-¾)	
S-LOC 18 *	1640/40	373 (400-¾)	
CIRCLING **	1960-1¾ 669 (700-1¾)	1960-2 669 (700-2)	1960-2¼ 669 (700-2¼)

HIRL all rwys					
FAF to MAP 4.8 NM					
Knots	120	140	160	180	200
Min:Sec	2:24	2:03	1:48	1:36	1:26

OKLAHOMA CITY, OKLAHOMA

35°25'N-97°23'W

TINKER AFB (KTIK)

Amtd 6 13JUN24

# HI-ILS or LOC/DME Y RWY 18

SC-1, 15 MAY 2025 to 12 JUN 2025

SC-1, 15 MAY 2025 to 12 JUN 2025