

DEVLN 1 DP (DEVLN1.DEVLN)

HILL AFB (KHIF)

[USAF]

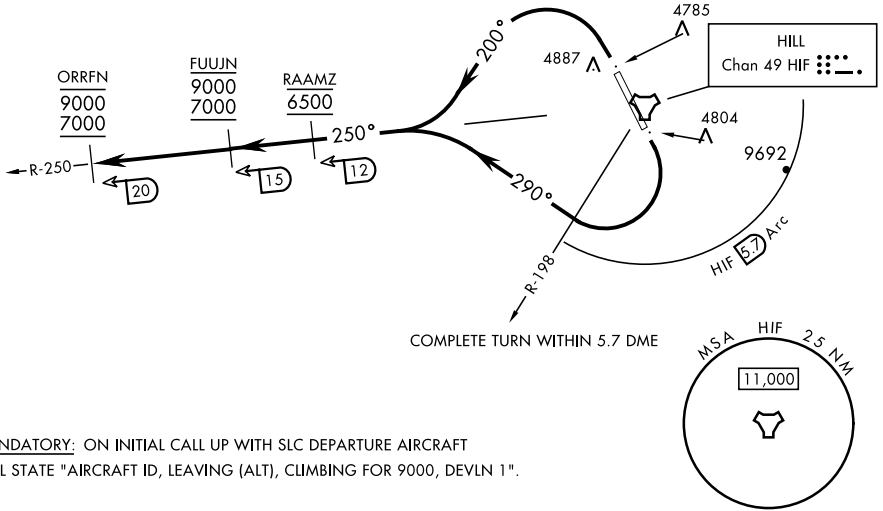
OGDEN, UTAH

ATIS 134.925 397.9
 CLNC DEL
 124.1 335.8
 GND CON
 121.6 275.8
 HILL TOWER
 127.15 263.15
 SALT LAKE CITY
 DEP CON
 121.1 319.25
 CLOVER CON
 134.1 285.65

Rwy	Knots	60	120	180	240	300	360
14	V/V(fpm)	2095	4190	6285	8380	10475	12570
32	V/V(fpm)	4610	9220	13830	18440	23050	27660

ATC Climb Rate to 5200

Airspeed in excess of 350 KIAS not authorized until established:
 Rwy 14 heading 290°
 Rwy 32 heading 200°



DEPARTURE ROUTE DESCRIPTION

TAKEOFF RWY 14: Turn right heading 290°, remain within HIF TACAN 5.7 DME until passing the HIF R-198 and established on a heading greater than 256°, intercept HIF R-250 outbound prior to HIF 12 DME, cross RAAMZ at 6500, climb and maintain 7000 block 9000 as depicted.

TAKEOFF RWY 32: Turn left heading 200°, intercept HIF TACAN R-250 outbound prior to HIF 12 DME, cross RAAMZ at 6500, climb and maintain 7000 block 9000 as depicted.

DEVLN 1 DP (DEVLN1.DEVLN)

Admt 1 31OCT24

OGDEN, UTAH
HILL AFB (KHIF)

SW-4, 15 MAY 2025 to 12 JUN 2025

SW-4, 15 MAY 2025 to 12 JUN 2025