

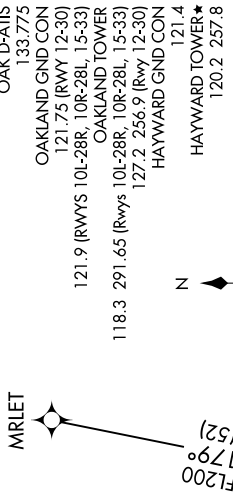
ARRIVAL ROUTE DESCRIPTION

- MRLLET TRANSITION (MRLLET.SHARR1)
- RPARK TRANSITION (RPARK.SHARR1)
- RUSME TRANSITION (RUSME.SHARR1)

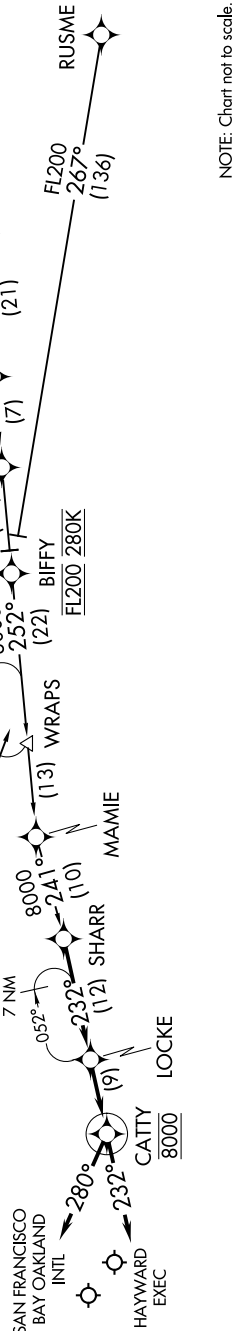
LANDING OAK: From SHARR on track 232° to LOCKE, then on track 232° to cross CATTY at 8000, then on heading 280° or as assigned by ATC. Expect RADAR vectors to final approach course.

LANDING HWD: From SHARR on track 232° to LOCKE, then on track 232° to cross CATTY at 8000, then on heading 232° or as assigned by ATC. Expect RADAR vectors to final approach course.

- NOTE: RADAR required.
- NOTE: RNAV 1.
- NOTE: DME/DME/IRU or GPS required.
- NOTE: Turbojet and turboprop aircraft only.
- NOTE: Landing OAK expect runway 10L/R and 12 unless otherwise assigned by ATC.
- NOTE: Landing HWD expect runway 28L/R unless otherwise assigned by ATC.



OAKLAND CENTER  
134.37 281.5  
NORCAL APP CON  
124.8 263.15  
HWD ATIS  
126.7  
OAK D-ATIS  
133.775  
OAKLAND GND CON  
121.75 (RWY 12-30)  
121.9 (RWYS 10L-28R, 10R-28L, 15-33)  
OAKLAND TOWER  
118.3 291.65 (Rwys 10L-28R, 10R-28L, 15-33)  
127.2 256.9 (RWY 12-30)  
HAYWARD GND CON  
121.4  
HAYWARD TOWER\*  
120.2 257.8



NOTE: Chart not to scale.