

WAAS CH 48928 W31A	APP CRS 314°	Rwy Idg TDZE Apt Elev	7002 7 21
--	------------------------	-----------------------------	--------------------------------------

RNAV (GPS) Z RWY 31

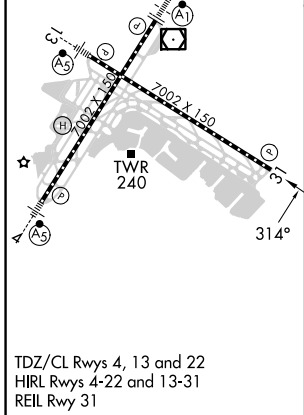
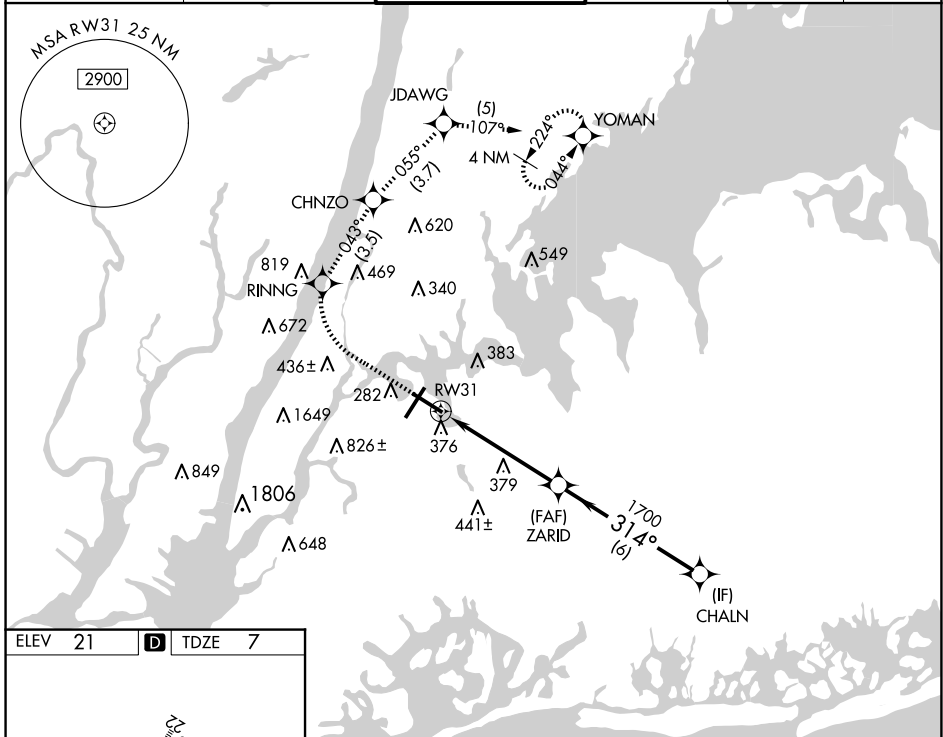
LAGUARDIA (L.G.A)

RNP APCH - GPS.

⚠ Rwy 31 helicopter visibility reduction below RVR 5000 NA.
⚠ For uncompensated Baro-VNAV systems, LNAV/VNAV NA below -11°C or above 54°C. Circling NA northwest of Rwy 4 and southwest of Rwy 13.

MISSED APPROACH: (Do not exceed 210K until YOMAN)
 Climb to 620 then climbing right turn to 3000 direct RINNG and on track 043° to CHNZO and on track 055° to JDAWG and on track 107° to YOMAN and hold, continue climb-in-hold to 3000.

D-ATIS ARR	125.95	NEW YORK APP CON	120.8 263.0	LAGUARDIA TOWER	118.7 263.0	GND CON	121.7 263.0	CLNC DEL	135.2	CPDLC
D-ATIS DEP	127.05									



ELEV	21	D	TDZE	7		
620	3000	RINNG	CHNZO	JDAWG	YOMAN	CHALN
↑	↷	✧ tr 043°	✧ tr 055°	✧ tr 107°	✧	
VGSI and RNAV glidepath not coincident (VGSI Angle 3.00/TCH 71). RWY 31 ZARID 1700 314° 2000 GP 3.10° TCH 50						
5 NM		6 NM				
CATEGORY	A	B	C	D		
LPV DA	330/50		323 (400-1)			
LNAV/VNAV DA	618-1¼		611 (600-1¼)			
LNAV MDA	640/55	633 (700-1)		640-1¼		633 (700-1¼)
CIRCLING	680-1	659 (700-1)		700-2 679 (700-2)		760-2¼ 739 (800-2¼)

NE-2, 15 MAY 2025 to 12 JUN 2025

NE-2, 15 MAY 2025 to 12 JUN 2025