

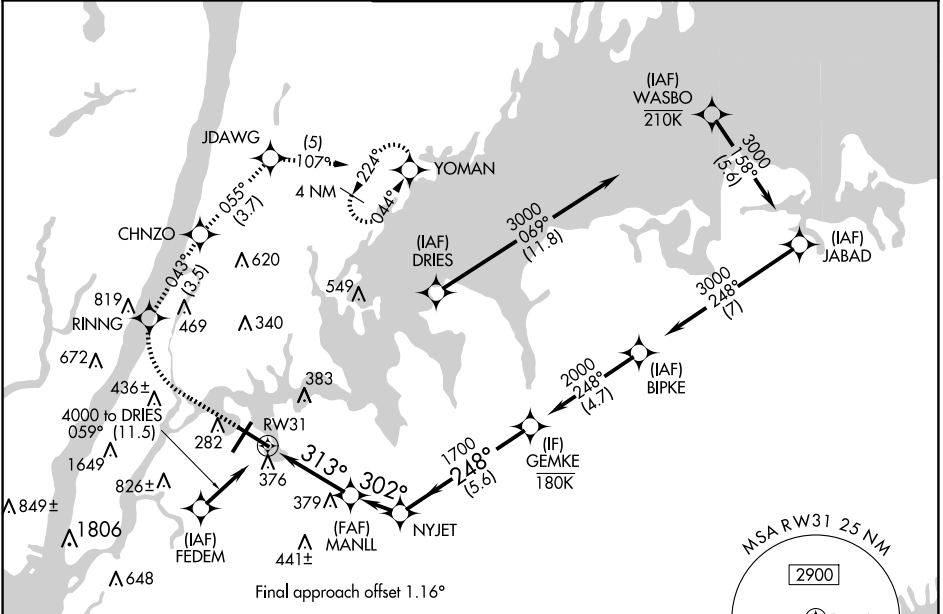
APP CRS	Rwy Idg	<b>7002</b>
<b>313°</b>	TDZE	<b>7</b>
	Apt Elev	<b>21</b>

# RNAV (GPS) Y RWY 31

LAGUARDIA (LGA)

RNP APCH - GPS.	MISSED APPROACH: (Do not exceed 210K until YOMAN) Climb to 620 then climbing right turn to 3000 direct RINNG and on track 043° to CHNZO and on track 055° to JDAWG and on track 107° to YOMAN and hold.
<p><b>▼</b> Rwy 31 helicopter visibility reduction below RVR 5000 NA. For uncompensated Baro-VNAV systems, LNAV/VNAV NA below -11°C or above 54°C. Circling NA northwest of Rwy 4 and southwest of Rwy 13.</p> <p><b>▲</b></p>	

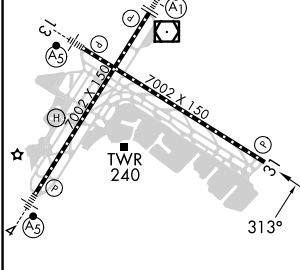
D-ATIS ARR <b>125.95</b>	NEW YORK APP CON <b>120.8 263.0</b>	LAGUARDIA TOWER <b>118.7 263.0</b>	GND CON <b>121.7 263.0</b>	CLNC DEL <b>135.2</b>	CPDLC
D-ATIS DEP <b>127.05</b>					



NE-2, 15 MAY 2025 to 12 JUN 2025

NE-2, 15 MAY 2025 to 12 JUN 2025

ELEV 21	<b>D</b>	TDZE 7
---------	----------	--------



TDZ/CL Rws 4, 13 and 22  
HIRL Rws 4-22 and 13-31  
REL Rwy 31

620	3000	RINNG	tr 043°	CHNZO	tr 055°	JDAWG	tr 107°	YOMAN	GEMKE
<p>VGSI and RNAV glidepath not coincident (VGSI Angle 3.00/TCH 71).</p> <p>NYJET</p> <p>MANLL</p> <p>RW31</p> <p>1200</p> <p>302°</p> <p>313°</p> <p>1700</p> <p>248°</p> <p>2000</p> <p>GP 3.10° TCH 50</p>									
3.5 NM			1.9 NM		5.6 NM				

CATEGORY	A	B	C	D
LNAV/ DA VNAV	618-1¾		611 (600-1¾)	
LNAV MDA	640/55	633 (700-1)	640-1¾	633 (700-1¾)
CIRCLING	680-1	659 (700-1)	700-2 679 (700-2)	760-2¼ 739 (800-2¼)