

# RNAV (GPS) X RWY 31 LAGUARDIA (LGA)

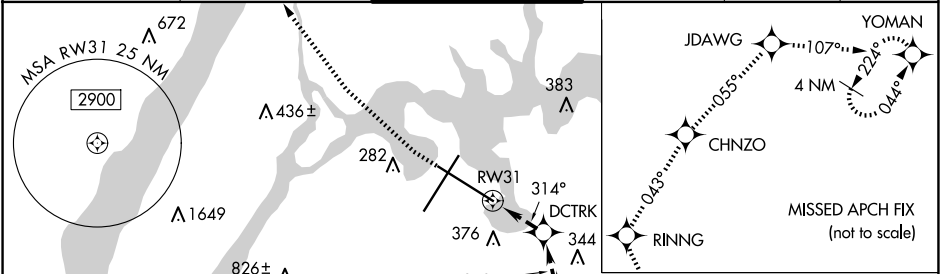
APP CRS	Rwy Idg	<b>7002</b>
<b>314°</b>	TDZE	<b>7</b>
	Apt Elev	<b>21</b>

RNP APCH - GPS.  
RADAR required.

**⚠** Rwy 31 helicopter visibility reduction below 3/4 SM NA.

MISSED APPROACH: (Do not exceed 165K until Rwy 31 and do not exceed 210K until YOMAN) Climbing right turn to 3000 direct RINNG and on track 043° to CHNZO and on track 055° to JDAWG and on track 107° to YOMAN and hold.

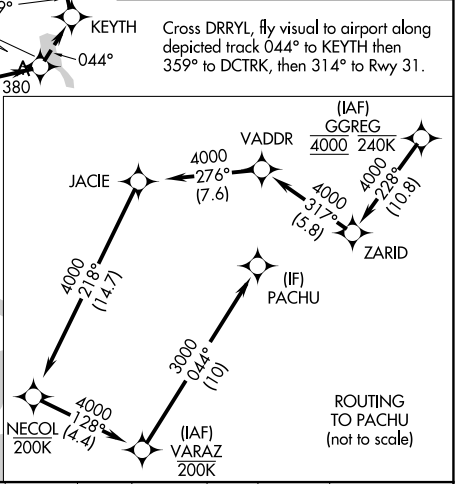
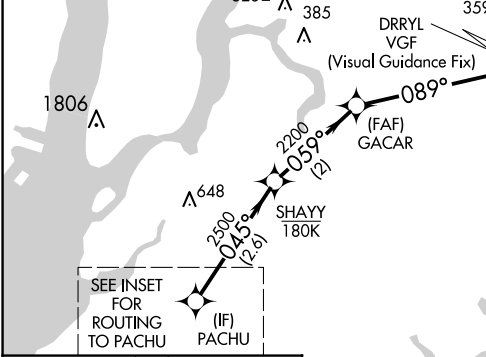
D-ATIS ARR	<b>125.95</b>	NEW YORK APP CON	<b>120.8 263.0</b>	LAGUARDIA TOWER	<b>118.7 263.0</b>	GND CON	<b>121.7 263.0</b>	CLNC DEL	<b>135.2</b>	CPDLC
D-ATIS DEP	<b>127.05</b>									



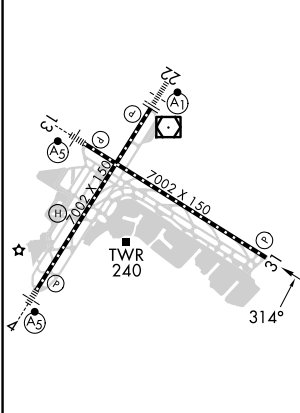
Cross DRRYL, fly visual to airport along depicted track 044° to KEYTH then 359° to DCTRK, then 314° to Rwy 31.

NE-2, 15 MAY 2025 to 12 JUN 2025

NE-2, 15 MAY 2025 to 12 JUN 2025

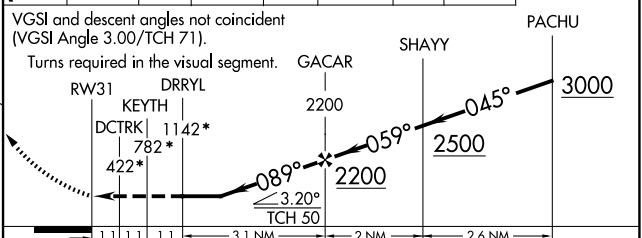


ELEV	21	<b>D</b>	TDZE	7
------	----	----------	------	---



TDZ/CL RWys 4, 13 and 22  
HIRL RWys 4-22 and 13-31  
REIL RWY 31

3000	RINNG	CHNZO	JDAWG	YOMAN	* Check ALT.
	tr 043°		tr 055°	tr 107°	



CATEGORY	A	B	C	D
LNAV MDA		1160-4	1153 (1200-4)	