

NTHNS SIX DEPARTURE (RNAV)

NEW YORK DEP CON
120.4 263.0
D-ATIS
127.05
CLNC DEL
135.2
GND CON
121.7 263.0
LAGUARDIA TOWER
118.7 263.0

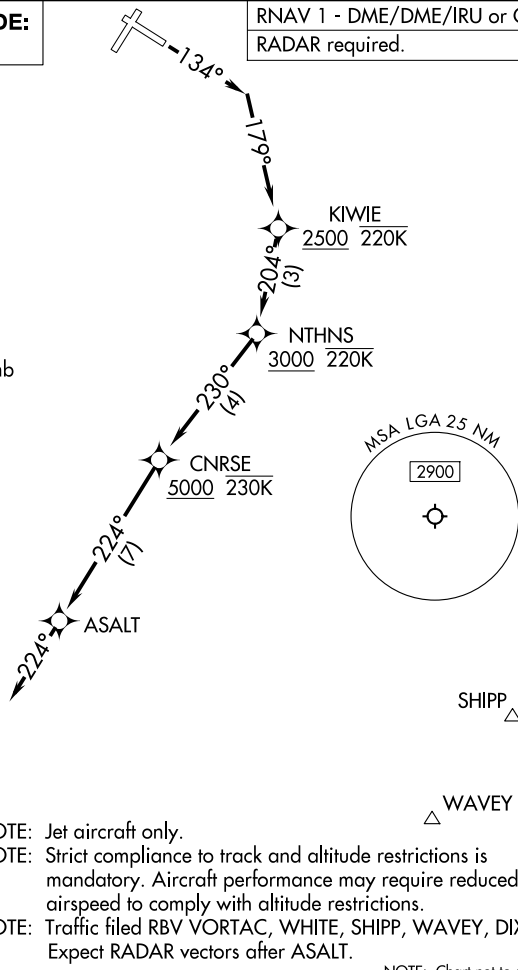
**TOP ALTITUDE:
5000**

RNAV 1 - DME/DME/IRU or GPS.
RADAR required.

TAKEOFF MINIMUMS:

Rwys 4, 22, 31: NA-ATC.

Rwy 13: Standard with minimum climb
of 620' per NM to 2500.



- NOTE: Jet aircraft only.
- NOTE: Strict compliance to track and altitude restrictions is mandatory. Aircraft performance may require reduced airspeed to comply with altitude restrictions.
- NOTE: Traffic filed RBV VORTAC, WHITE, SHIPP, WAVEY, DIXIE: Expect RADAR vectors after ASALT.

NOTE: Chart not to scale.

DEPARTURE ROUTE DESCRIPTION

TAKEOFF RUNWAY 13: Climb on heading 134° to intercept course 179° to cross KIWIE at or above 2500 and at or below 220K, then on track 204° to cross NTHNS at or above 3000 and at or below 220K, then on track 230° to cross CNRSE at or above 5000 and at or below 230K, then on track 224° to ASALT, then on track 224° for RADAR vector on course. Maintain 5000. Expect clearance to filed altitude 10 minutes after departure.

ALL AIRCRAFT ATC CLIMB GRADIENT: If unable to accept climb rate, advise ATC prior to taxi.

RUNWAY 13: Standard with minimum climb of 620' per NM to 2500.