

VORTAC HRV 114.1 Chan 88	APP CRS 351°	Rwy Idg 5135 TDZE 8 Apt Elev 8
--	------------------------	---

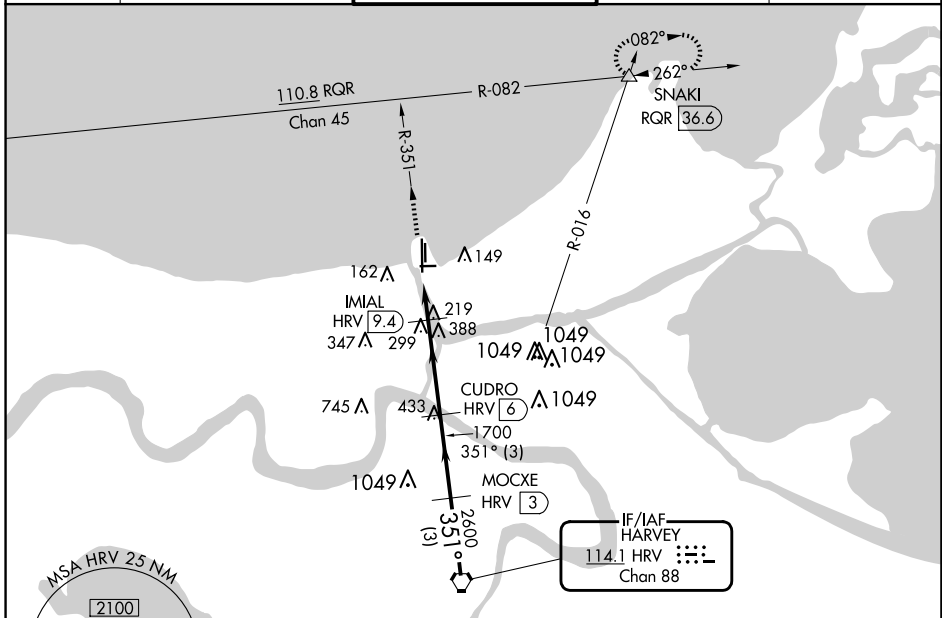
VOR/DME RWY 36L

LAKEFRONT (NEW)

▽ Visibility reduction by helicopters NA.
▲ When local altimeter setting not received, use Louis Armstrong New Orleans Intl altimeter setting and increase all MDA 40 feet and increase S-36L Cat C/D and Circling Cat D visibilities ¼ mile.

MISSED APPROACH: Climb to 2000 via HRV R-351 and RQR R-082 to SNAKI INT/RQR 36.6 DME and hold.

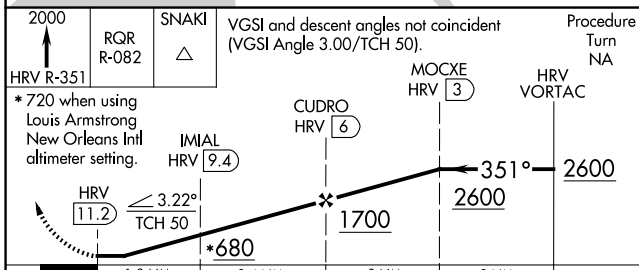
ATIS 124.9	NEW ORLEANS APP CON NORTH 133.15 290.3 SOUTH 123.85 256.9	LAKEFRONT TOWER * 118.95 (CTAF) 0	GND CON 121.7 335.575	CLNC DEL 127.4
----------------------	---	--	---------------------------------	--------------------------



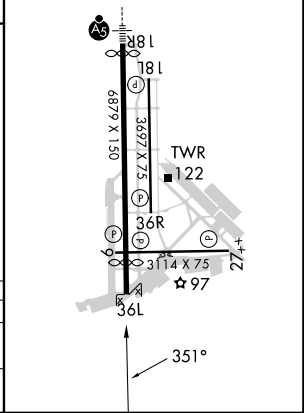
Procedure NA for arrivals at HRV VORTAC via V552 southbound and A321 northwest bound.

ELEV 8	D TDZE 8
---------------	------------------------

MIRL Rwy 18R-36L **0**
 MIRL Rws 9-27 and 18L-36R
 REIL Rws 9, 18L, 36L and 36R



CATEGORY	A	B	C	D
S-36L	480-1 472 (500-1)		480-1¼ 472 (500-1¼)	480-1½ 472 (500-1½)
CIRCLING	520-1 512 (600-1)		700-2 692 (700-2)	820-2¾ 812 (900-2¾)



SC-4, 15 MAY 2025 to 12 JUN 2025

SC-4, 15 MAY 2025 to 12 JUN 2025