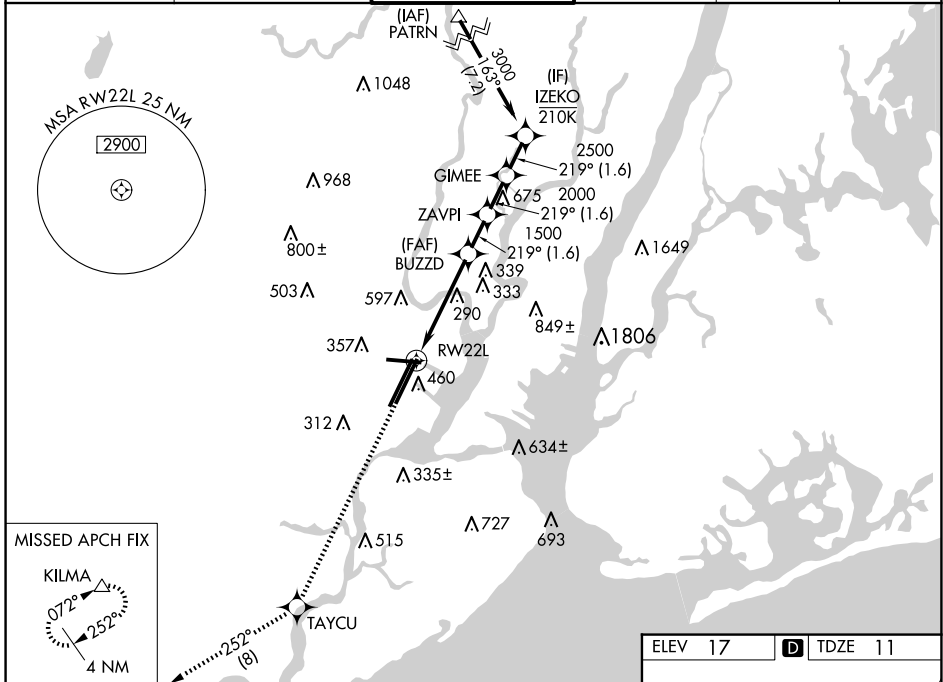


WAAS CH 70324 W22A	APP CRS 219°	Rwy Idg 8205 TDZE 11 Apt Elev 17
----------------------------------------	------------------------	-------------------------------------------------------------

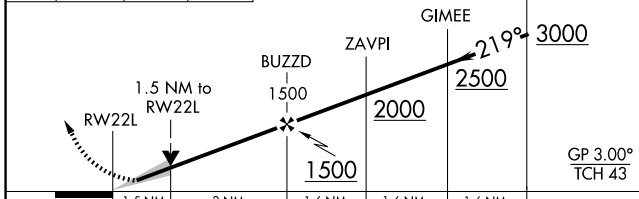
RNAV (GPS) Z RWY 22L

NEWARK LIBERTY INTL (EWR)

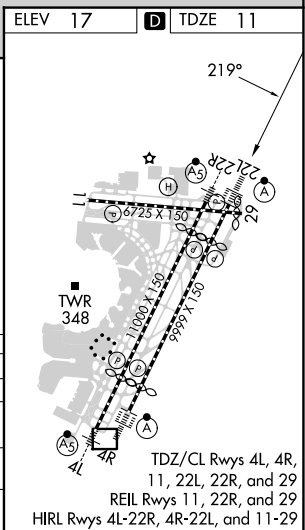
RNP APCH - GPS.		ALSIF-2		MISSED APPROACH: Climb to 3000 direct TAYCU and on track 252° to KILMA and hold.	
<p>⚠ Circling NA south of Rwy 11-29. For uncompensated Baro-VNAV systems, LNAV/VNAV NA below -12°C or above 54°C. When Circling to Rwy 29 at night, operational VGSI required, remain on or above VGSI glidepath until threshold.</p>					
D-ATIS 115.7 134.825	NEWARK APP CON 128.55 379.9	NEWARK TOWER 118.3 257.6		GND CON 121.8	CLNC DEL 118.85
			CPDLC		



3000	TAYCU	tr 252°	KILMA	VGSI and RNAV glidepath not coincident (VGSI Angle 3.00/TCH 60).
------	-------	---------	-------	------------------------------------------------------------------



CATEGORY	A		B		C		D	
LPV DA	211/18		200 (200-½)					
LNAV/VNAV DA	462/45		451 (500-¾)					
LNAV MDA	560/24	549 (600-½)	560/60		549 (600-1¼)			
C CIRCLING	660-1	643 (700-1)	900-2¾ 883 (900-2¾)		900-3 883 (900-3)			



NE-2, 15 MAY 2025 to 12 JUN 2025

NE-2, 15 MAY 2025 to 12 JUN 2025