

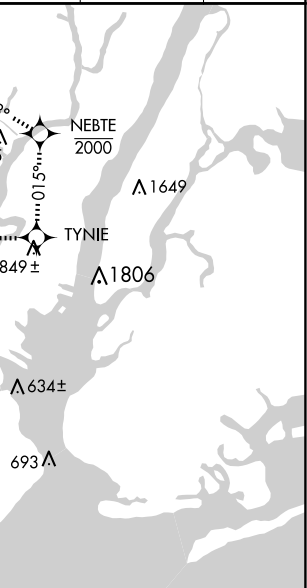
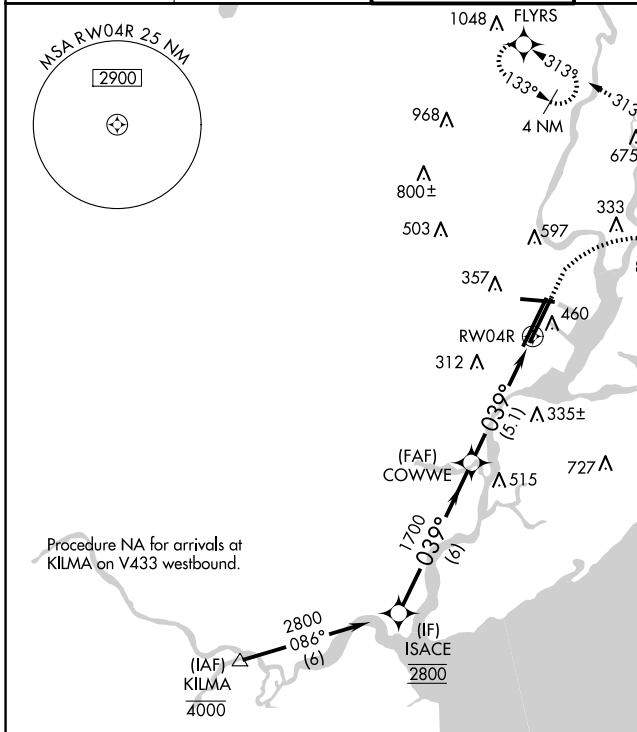
APP CRS	Rwy Idg	8809
039°	TDZE	11
	Apt Elev	17

RNAV (RNP) Z RWY 4R

NEWARK LIBERTY INTL (EWR)

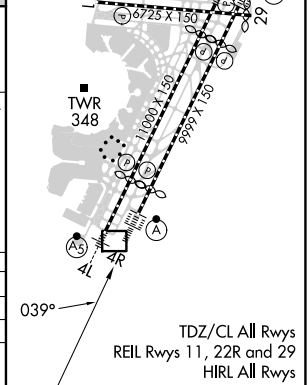
RNP AR APCH.	ALSF-2		MISSED APPROACH: (Do not exceed 210K until NEBTE) Climb to 560 then climbing right turn to 2000 direct TYNIE and left turn on track 015° to NEBTE, cross NEBTE at or below 2000 then dimbling left turn to 3000 on track 313° to FLYRS and hold, continue climb-in-hold to 3000. * Missed approach requires minimum climb of 351 feet per NM to 660.
RADAR required.			
For uncompensated Baro-VNAV systems, procedure NA below -12°C or above 54°C. For inop ALS, increase RNP 0.30 all Cats visibility to 1 1/2 SM.			

D-ATIS	NEWARK APP CON	NEWARK TOWER	GND CON	CLNC DEL	CPDLC
115.7 134.825	128.55 379.9	118.3 257.6	121.8	118.85	



ELEV 17	D	TDZE 11
---------	----------	---------

	ISACE	560	2000	TYNIE	tr 015°	NEBTE	3000	FLYRS
		VGS1 and RNAV glidepath not coincident (VGS1 Angle 2.95/TCH 71).						
		COWWE	1700			RW04R		
		6 NM		5.1 NM				
GP 3.04°								
TCH 55								
CATEGORY	A	B	C	D				
RNP 0.15 DA*		396/35	385 (400-3/4)					
RNP 0.30 DA		490/50	479 (500-1)					
AUTHORIZATION REQUIRED								



RNAV (RNP) Z RWY 4R

NE-2, 15 MAY 2025 to 12 JUN 2025

NE-2, 15 MAY 2025 to 12 JUN 2025

TDZ/CL All Rwys
REIL Rwys 11, 22R and 29
HIRL All Rwys