

PHLBO FOUR ARRIVAL (RNAV) Transition Routes

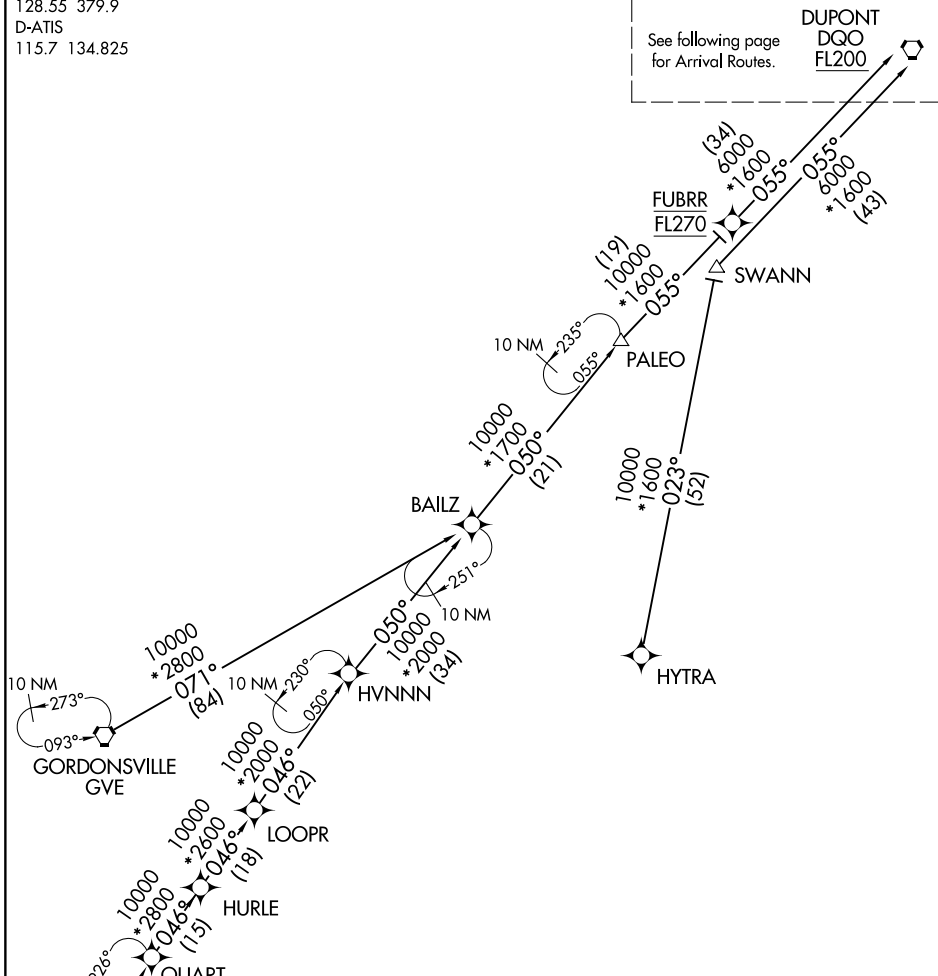
NEWARK LIBERTY INTL (EWR)
NEWARK, NEW JERSEY

WASHINGTON CENTER
132.52 307.25
NEWARK APP CON
128.55 379.9
D-ATIS
115.7 134.825

RNAV 1 - DME/DME/IRU or GPS.

RADAR required.

See following page for Arrival Routes.
DUPONT
DQO
FL200



NE-2, 15 MAY 2025 to 12 JUN 2025

NE-2, 15 MAY 2025 to 12 JUN 2025

- NOTE: Jet aircraft only.
- NOTE: HYTRA Transition do not file - to be assigned by ATC.
- NOTE: Landing Rwy 4L/R & 29, approaching METRO expect RADAR vectors.
- NOTE: Landing Rwy 11 & 22L/R, approaching PHLBO expect RADAR vectors.

NOTE: Chart not to scale.

GORDONSVILLE TRANSITION (GVE.PHLBO4)
 HYTRA TRANSITION (HYTRA.PHLBO4)
 QUART TRANSITION (QUART.PHLBO4)
 SWANN TRANSITION (SWANN.PHLBO4)

(CONTINUED ON FOLLOWING PAGE)

PHLBO FOUR ARRIVAL (RNAV) Transition Routes

NEWARK, NEW JERSEY
NEWARK LIBERTY INTL (EWR)