

# PENNS TWO ARRIVAL

NE-2, 15 MAY 2025 to 12 JUN 2025

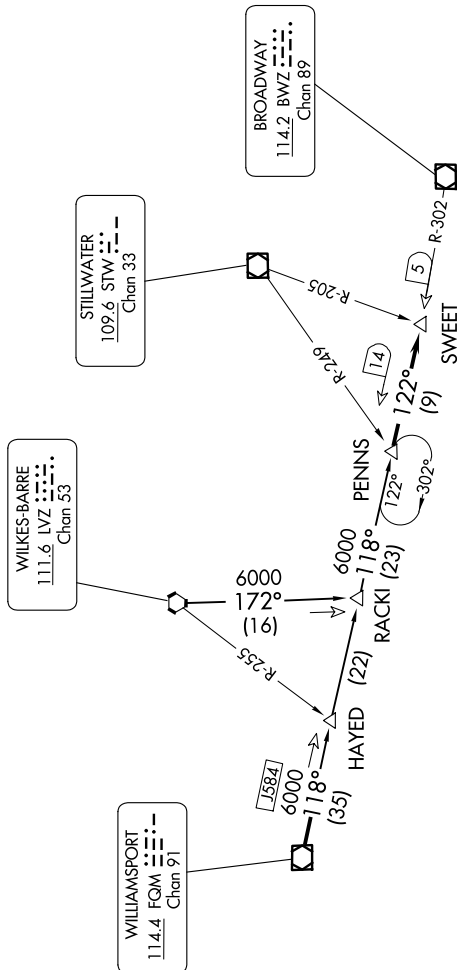
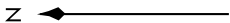
NEWARK APP CON  
127.6 379.9  
D-ATIS  
115.7 134.825

WILKES-BARRE  
111.6 LVZ  
Chan 53

WILLIAMSPORT  
114.4 FQM  
Chan 91

STILLWATER  
109.6 STW  
Chan 33

BROADWAY  
114.2 BWZ  
Chan 89



NOTE: This STAR is applicable to non-jet aircraft filed less than 250K landing Newark Liberty Intl airport.

## ARRIVAL ROUTE DESCRIPTION

WILKES-BARRE TRANSITION (LVZ.PENNS2): From over LVZ VORTAC via R-172 to RACKI INT, then via FQM R-118 to PENNS INT. Thence . . . .

WILLIAMSPORT TRANSITION (FQM.PENNS2): From over FQM VOR/DME via FQM R-118 to PENNS INT. Thence . . . .

. . . . From over PENNS INT via BWZ VOR/DME R-302 to SWEET INT. Expect radar vectors to final approach course.

NOTE: Chart not to scale.

# PENNS TWO ARRIVAL

NE-2, 15 MAY 2025 to 12 JUN 2025