

LOC/DME I-EWR	APP CRS	Rwy Idg	4L	4R
110.75	039°		8459	8809
Chan 44 (Y)		TDZE	10	11
		Apt Elev	17	17

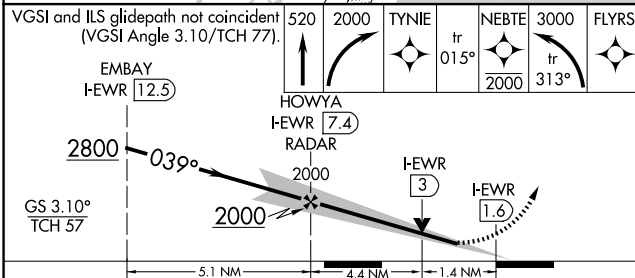
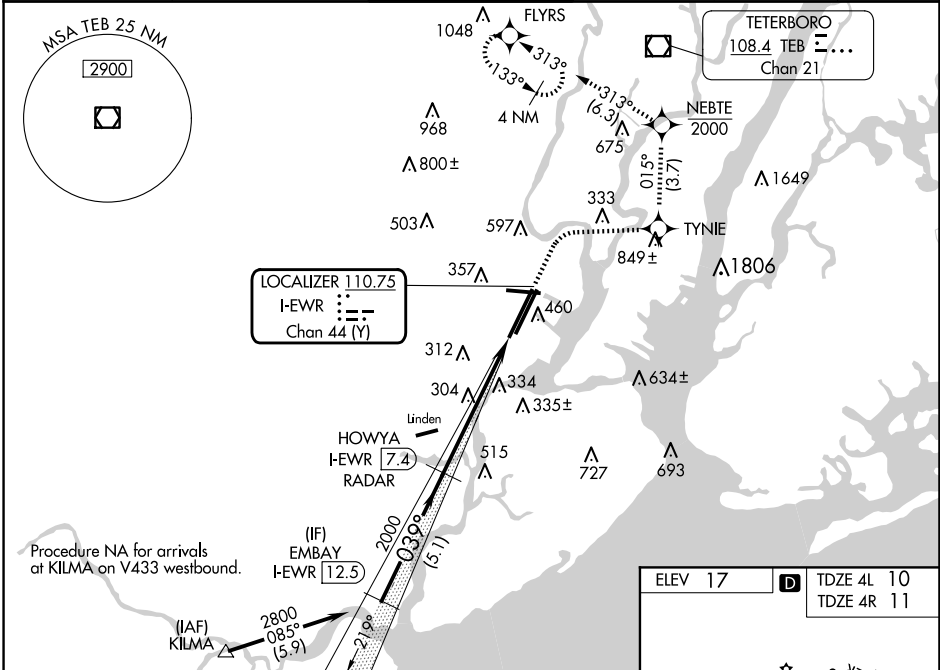
ILS Z or LOC Z RWY 4L

NEWARK LIBERTY INTL (EWR)

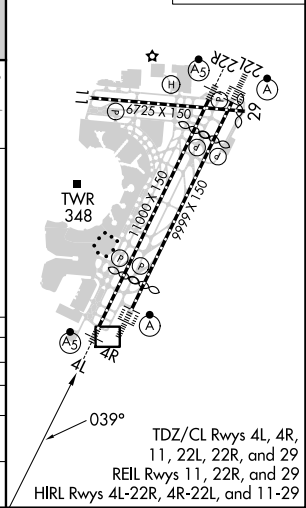
RNP APCH - GPS.
 DME and RADAR required.
 ⚠ When Circling to Rwy 29 at night, operational VGSI required, remain on or above VGSI glidepath until threshold. For inop ALS, increase sidestep 4R Cat C visibility to 1½ SM.

4L MALSR
 4R ALSF-2
 MISSED APPROACH: (Do not exceed 210K until NEBTE) Climb to 520, then climbing right turn to 2000 direct TYNIE and on track 015° to NEBTE, cross NEBTE at or below 2000, then climbing left turn to 3000 on track 313° to FLYRS and hold, continue climb-in-hold to 3000.

D-ATIS	NEWARK APP CON	NEWARK TOWER	GND CON	CLNC DEL	CPDLC
115.7 134.825	128.55 379.9	118.3 257.6	121.8	118.85	



ELEV 17	TDZE 4L 10
	TDZE 4R 11



CATEGORY	A	B	C	D
S-ILS 4L	210/18 200 (200-½)			
S-LOC 4L	560/24	550 (600-½)	560/60	550 (600-1¼)
SIDESTEP 4R	600/55	589 (600-1)	600/60 589 (600-1¼)	600-1½ 589 (600-1½)
CIRCLING	760-1	743 (800-1)	900-2¾ 883 (900-2¾)	900-3 883 (900-3)

ILS Z or LOC Z RWY 4L

NE-2, 15 MAY 2025 to 12 JUN 2025

NE-2, 15 MAY 2025 to 12 JUN 2025