

(RYYMN.RYYMN2)

20254

AL-282 (FAA)

NASHVILLE INTL (BNA)

NASHVILLE, TENNESSEE

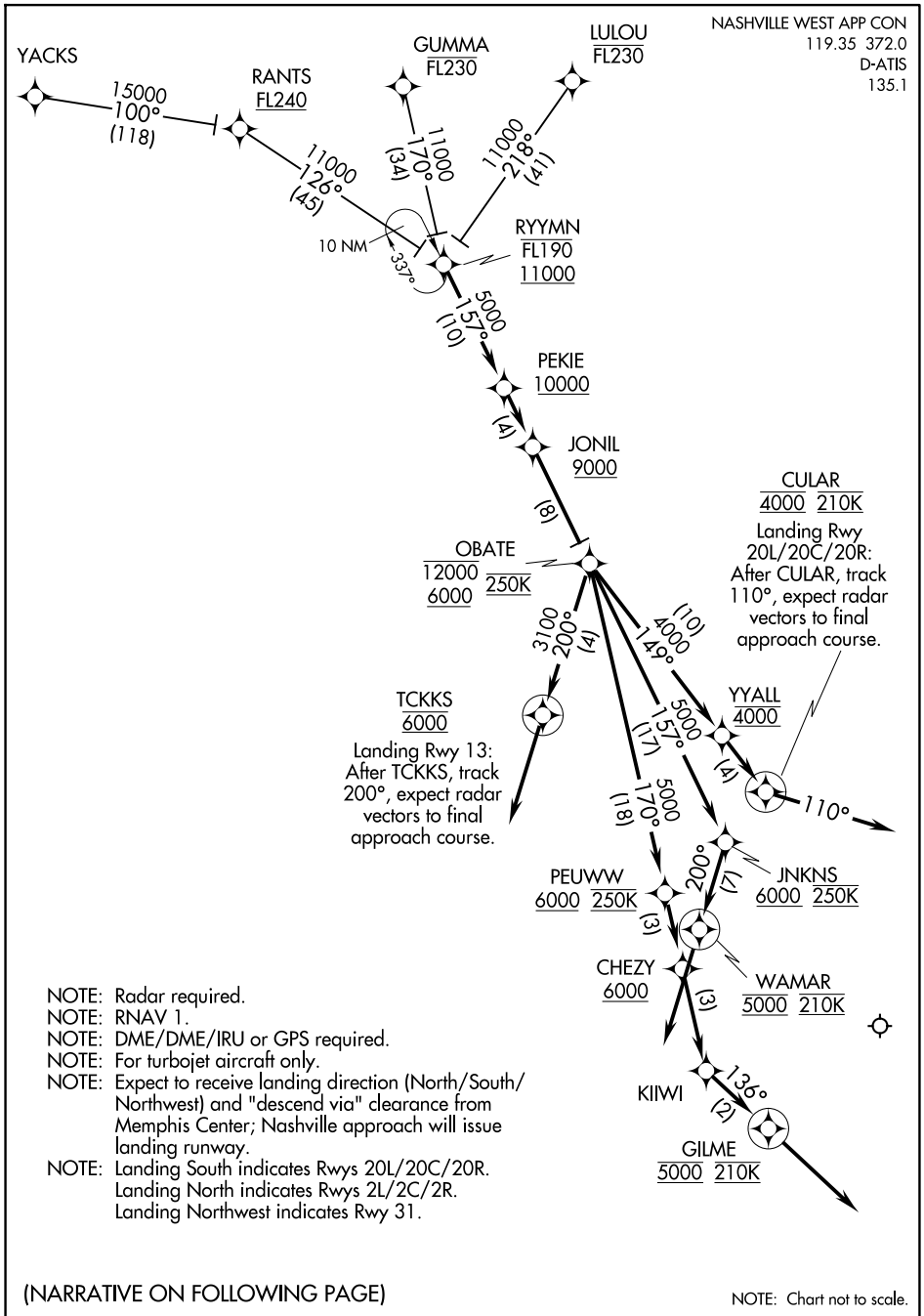
# RYYMN TWO ARRIVAL (RNAV)

NASHVILLE WEST APP CON

119.35 372.0

D-ATIS

135.1



SE-1, 15 MAY 2025 to 12 JUN 2025

SE-1, 15 MAY 2025 to 12 JUN 2025

- NOTE: Radar required.
- NOTE: RNAV 1.
- NOTE: DME/DME/IRU or GPS required.
- NOTE: For turbojet aircraft only.
- NOTE: Expect to receive landing direction (North/South/Northwest) and "descend via" clearance from Memphis Center; Nashville approach will issue landing runway.
- NOTE: Landing South indicates Rwys 20L/20C/20R.
- NOTE: Landing North indicates Rwys 2L/2C/2R.
- NOTE: Landing Northwest indicates Rwy 31.

(NARRATIVE ON FOLLOWING PAGE)

NOTE: Chart not to scale.

# RYYMN TWO ARRIVAL (RNAV)

(RYYMN.RYYMN2)

24JUL14

NASHVILLE, TENNESSEE

NASHVILLE INTL (BNA)