

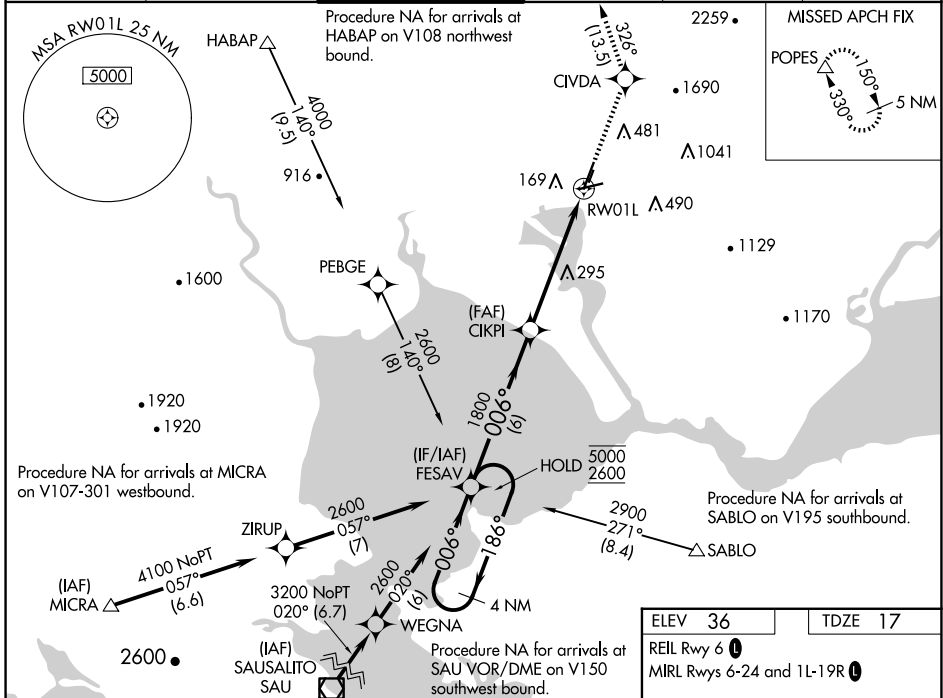
WAAS CH 56613 W01A	APP CRS 006°	Rwy Idg 5930 TDZE 17 Apt Elev 36
--	------------------------	---

RNAV (GPS) Y RWY 1L

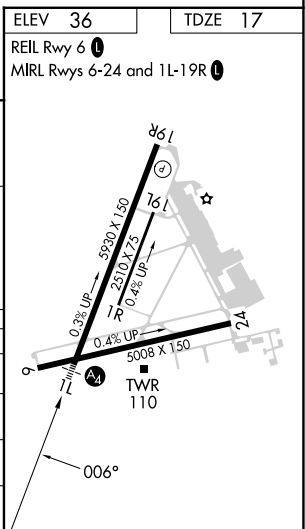
NAPA COUNTY (APC)

RNP APCH.	MALS 	MISSED APPROACH: Climb to 5000 direct CIVDA and on track 326° to POPES and hold, continue climb-in-hold to 5000.
<p>▽ For uncompensated Baro-VNAV systems, LNAV/VNAV NA below -4°C or above 54°C. Circling Cats A/B/C NA northeast or Rwy's 19R and 24. Circling Cat D NA east of Rwy 19L-1R. Inop table does not apply to LPV, LNAV/VNAV all Cats, and LNAV Cats C/D. Circling Rwy 6 NA at night.</p>		

ATIS 124.05	OAKLAND CENTER 127.8 353.5	NAPA TOWER ★ 118.7 (CTAF) 0 257.8	GND CON 121.7	CLNC DEL 127.85	UNICOM 122.95
-----------------------	--------------------------------------	---	-------------------------	---------------------------	-------------------------



4 NM Holding Pattern		5000 CIVDA tr POPES		
5000 ← 186°		*3.7 NM to RWY01L		
2600 → 006°		*RNAV only		
GP 3.00° TCH 50		RWY01L		
6 NM		1.8 NM		
3.7 NM		3.7 NM		
CATEGORY	A	B	C	D
LPV DA		1252-5	1235 (1300-5)	
LNAV/VNAV DA		1051-4	1034 (1100-4)	
LNAV MDA	1260-1 1243 (1300-1)	1260-1½ 1243 (1300-1½)	1260-3 1243 (1300-3)	
C CIRCLING	1260-1½ 1224 (1300-1½)	1260-1½ 1224 (1300-1½)	1280-3 1244 (1300-3)	1300-3 1264 (1300-3)



SW-2, 15 MAY 2025 to 12 JUN 2025

SW-2, 15 MAY 2025 to 12 JUN 2025