

WAAS CH 69410 W14A	APP CRS 141°	Rwy Idg TDZE Apt Elev	6100 627 629
--	------------------------	-----------------------------	---

RNAV (GPS) RWY 14

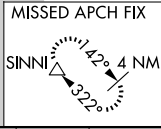
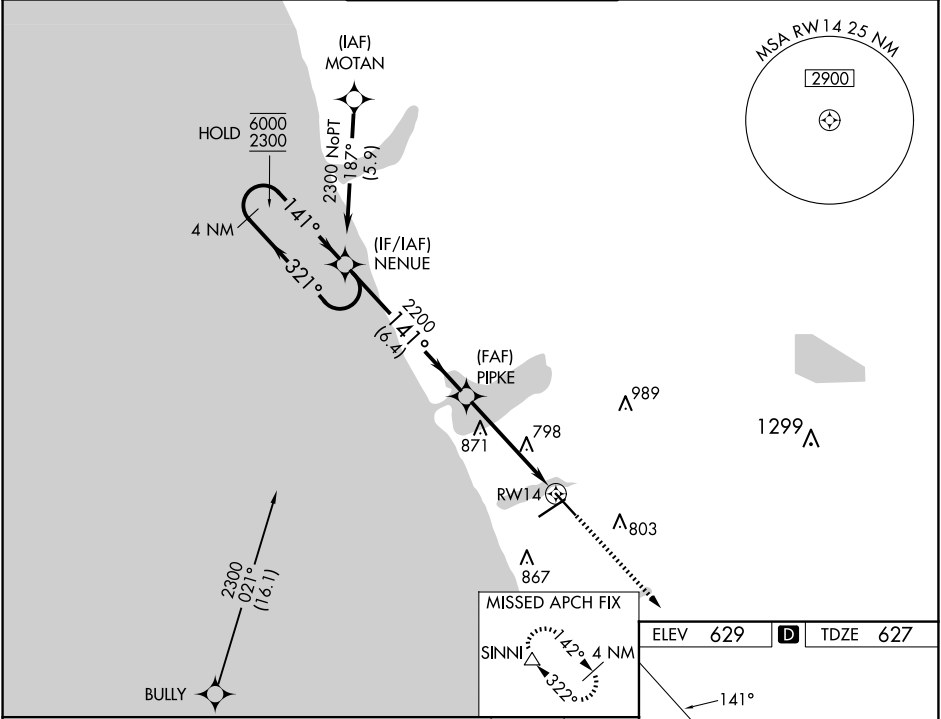
MUSKEGON COUNTY (MKG)

RNP APCH.

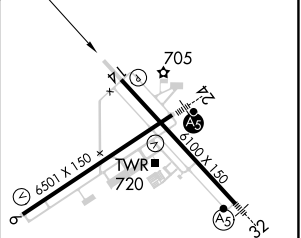
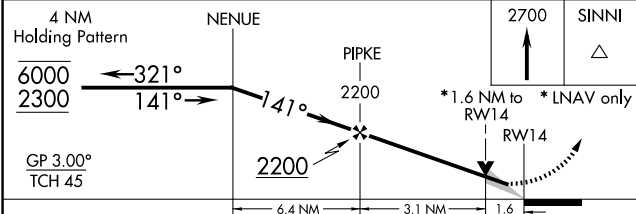
▼ For uncompensated Baro-VNAV systems, LNAV/VNAV NA below -18°C or above 54°C.

MISSED APPROACH:
Climb to 2700 direct SINNI and hold.

ATIS 124.3	GREAT LAKES APP CON * 119.8 290.35 (North) 133.825 290.35 (South)	MUSKEGON TOWER * 126.25 (CTAF) 0 343.725	GND CON 121.6	UNICOM 122.95
----------------------	---	---	-------------------------	-------------------------



ELEV 629	D	TDZE 627
----------	----------	----------



CATEGORY	A	B	C	D
LPV DA		877-3/4	250 (300-3/4)	
LNAV/VNAV DA		1079-1 1/2	452 (500-1 1/2)	
LNAV MDA	1180-1	553 (600-1)	1180-1 1/2 553 (600-1 1/2)	1180-1 3/4 553 (600-1 3/4)
C CIRCLING	1180-1	551 (600-1)	1200-1 1/2 571 (600-1 1/2)	1200-2 571 (600-2)

REIL Rwy 6 **0**
REIL Rwy 14
HIRL Rwys 6-24 **0**
HIRL Rwys 14-32

EC-1, 15 MAY 2025 to 12 JUN 2025

EC-1, 15 MAY 2025 to 12 JUN 2025