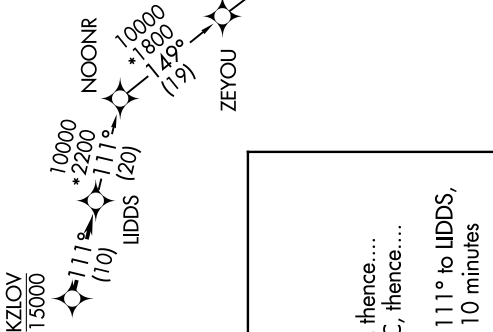


SELFRRIDGE DEP CON ★  
119.6 391.9  
ATIS  
125.325 270.1  
CLINC.DEL  
128.3 275.8  
GND CON  
128.3 275.8  
SELFRRIDGE TOWER ★  
120.15 225.4

RNAV 1 - DME/DME/IRU or GPS.  
RADAR required  
RADAR required for non-GPS equipped aircraft.

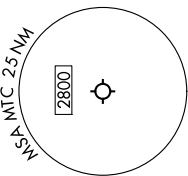
TAKEOFF MINIMUMS:

Rwy 1: Standard.  
Rwy 19: Standard with minimum climb  
of 235' per NM to 1500.



NOTE: Chart not to scale.

**TOP ALTITUDE:  
ASSIGNED BY ATC**



NOTE: Turbojet departures at/above 10000,  
maintain 280K until advised by ATC.

**DEPARTURE ROUTE DESCRIPTION**

TAKEOFF RUNWAY 1: Climb on heading 007° or as assigned by ATC, thence....  
TAKEOFF RUNWAY 19: Climb on heading 187° or as assigned by ATC, thence....  
.... for RADAR vectors to cross KZLOV at or below 15000, then on track 111° to LIDDS,  
then on (transition). Maintain ATC assigned altitude, expect filed altitude 10 minutes  
after departure.

GRIVY TRANSITION (LIDDS4.GRIVY):