

TACAN RWY 15

TACAN MXF Chan 97	APCH CRS 158°	Rwy ldg 8008 TDZE 171 Arpt Elev 171
----------------------	------------------	--

[USAF]

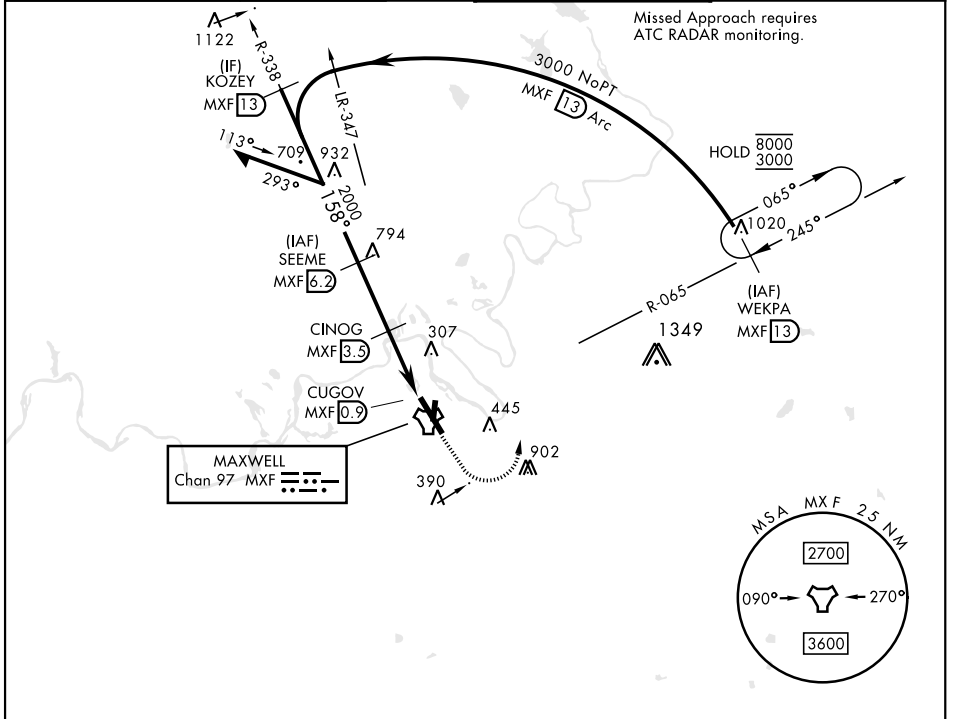
MAXWELL AFB (KMXF)

▼ * When ALS inop, increase CAT AB RVR to 55 and vis to 1 mile, CAT CDE and vis to 1½ miles.
 ** Circling not authorized E of Rwy 15-33.



MISSED APPROACH: Climb to 1000, then climbing left turn to 3000 to intercept MXF TACAN R-065 outbound to 13 DME (WEKPA) and hold.

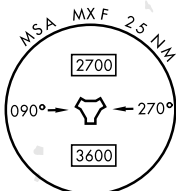
ATIS ★ 134.7 269.9	MONTGOMERY APP CON ★ 121.2 269.05 (N) 124.0 363.025 (S)	TOWER ★ 118.15 253.5	GND CON ★ 127.15 289.4
-----------------------	---	-------------------------	---------------------------



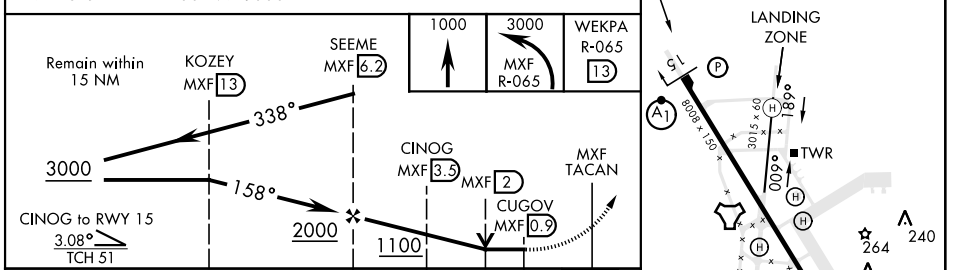
SE-4, 15 MAY 2025 to 12 JUN 2025

SE-4, 15 MAY 2025 to 12 JUN 2025

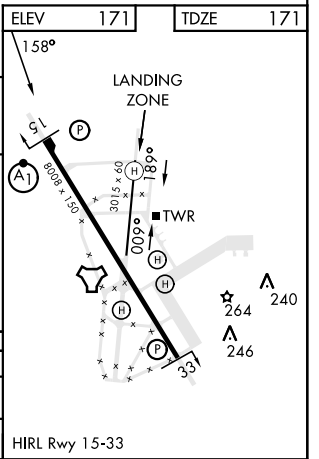
MAXWELL
Chan 97 MXF [Symbol]



ELEV 171	TDZE 171
----------	----------



CATEGORY	A	B	C	D	E
S-15 *	620/24	449 (500-½)	620/45	449 (500-¾)	
CIRCLING **	680-1	509 (600-1)	720-1½ 549 (600-1½)	920-2½ 749 (800-2½)	NA



TACAN RWY 15