

ILS or LOC/DME RWY 15

LOC I-MXF 109.3	APCH CRS 150°	Rwy Idg 8008
		TDZE 171
		Arprt Elev 171

[USAF]

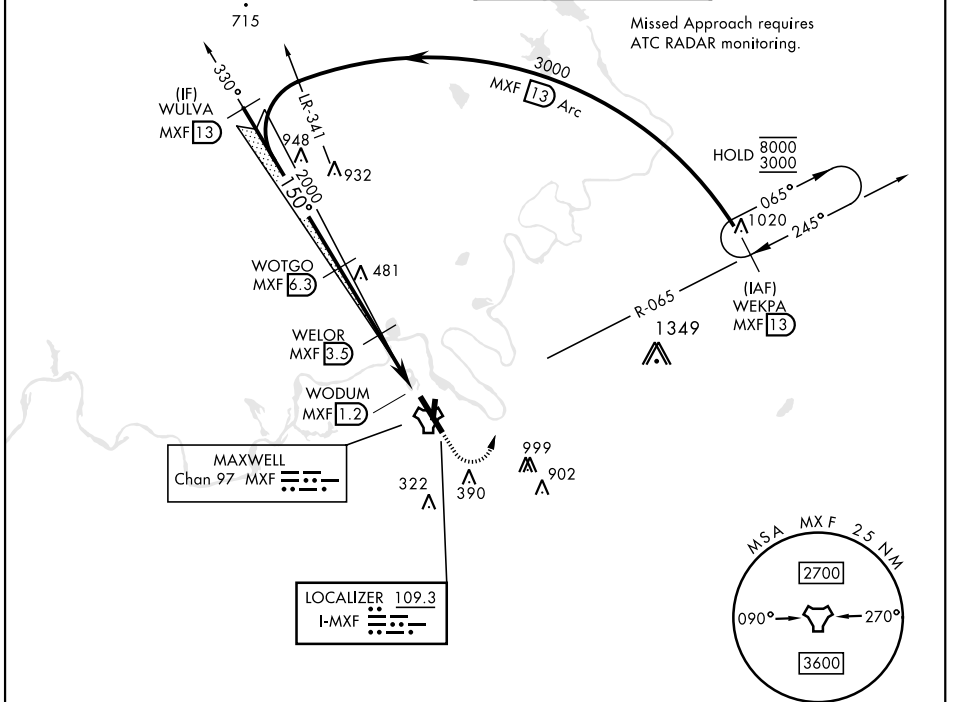
MAXWELL AFB (KMXF)

V * When ALS inop, increase RVR to 40 and vis to ¾ mile.
 ** When ALS inop, increase CAT AB RVR to 55 and vis to 1 mile, CAT CDE vis to 1¼ mile.
 *** Circling not authorized E of Rwy 15-33.



MISSED APPROACH: Climb to 1000, then climbing left turn to 3000 to intercept MXF TACAN R-065 outbound to 13 DME (WEKPA) and hold.

ATIS ★ 134.7 269.9	MONTGOMERY APP CON ★ 121.2 269.05 (N) 124.0 363.025 (S)	TOWER ★ 118.15 253.5	GND CON ★ 127.15 289.4
------------------------------	---	--------------------------------	----------------------------------



SE-4, 15 MAY 2025 to 12 JUN 2025

SE-4, 15 MAY 2025 to 12 JUN 2025

EMERG SAFE ALT 100 NM 5000

	1000	3000	WEKPA R-065	ELEV	171	TDZE	171
	MXF R-065	MXF R-065	[13]				
CATEGORY	A	B	C	D	E		
S-ILS 15 *	371/24		200	(200-½)			
S-LOC 15 **	600/24	429	(500-½)		600/40	429	(500-¾)
*** CIRCLING	680-1	509	(600-1)		720-1½	920-2½	NA
					549 (600-1½)	749 (800-2½)	

HIRL Rwy 15-33

ILS or LOC/DME RWY 15