

ILS RWY 15 (SA CAT I & II)

MOBILE RGNL (MOB)

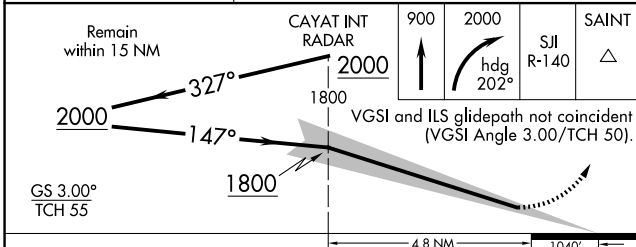
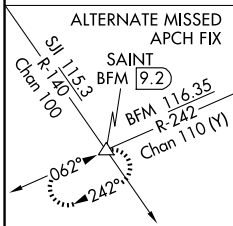
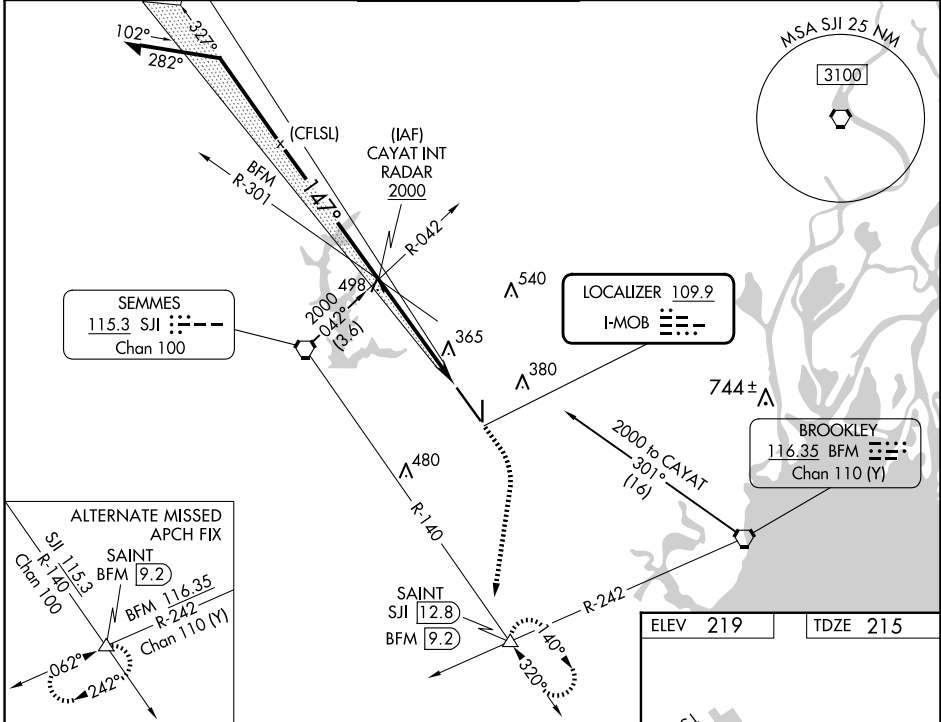
LOC I-MOB 109.9	APP CRS 147°	Rwy Idg 8502
		TDZE 215
		Apt Elev 219

⚠ Procedure NA when tower closed.
⚠ SA CAT I: Requires specific OPSPEC, MSPEC, or LOA approval and use of HUD to DH.
⚠ ASR SA CAT II: Reduced Lighting: Requires specific OPSPEC, MSPEC, or LOA approval and use of autoland or HUD to touchdown.

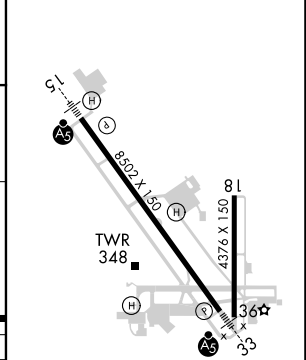


MISSED APPROACH: Climb to 900 then climbing right turn to 2000 on heading 202° then on SJI VORTAC R-140 to SAINT/ SJI 12.8 DME and hold.

ATIS 124.75 257.85	MOBILE APP CON ★ 118.5 269.3	MOBILE TOWER ★ 118.3 (CTAF) 239.0	GND CON 121.9 348.6	CLNC DEL 119.85	UNICOM 122.95
------------------------------	--	---	-------------------------------	---------------------------	-------------------------



ELEV 219	TDZE 215
----------	----------



CATEGORY	A	B	C	D
S-ILS 15	SA CAT I RA 171/14 150 DA 365			
S-ILS 15	SA CAT II RA 109/12 100 DA 315			

SA CATEGORY I & II ILS - SPECIAL AIRCREW & AIRCRAFT CERTIFICATION REQUIRED

MIRL Rwy 18-36
 HIRL Rwy 15-33

SE-4, 15 MAY 2025 to 12 JUN 2025

SE-4, 15 MAY 2025 to 12 JUN 2025