

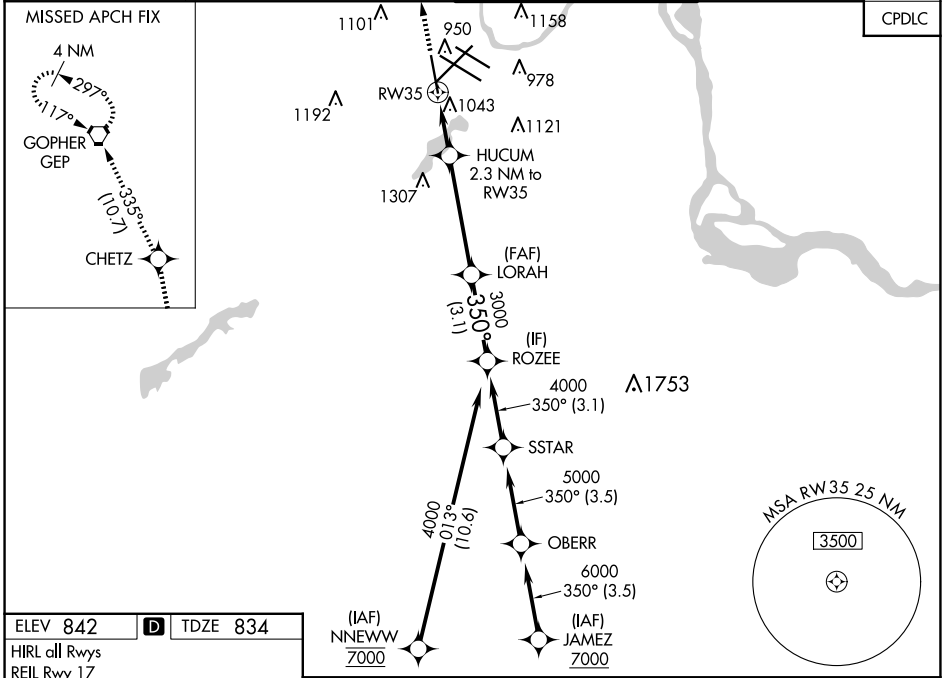
WAAS CH 90128 W35A	APP CRS 350°	Rwy ldg TDZE 834 Apt Elev 842
--	------------------------	---

RNAV (GPS) Z RWY 35

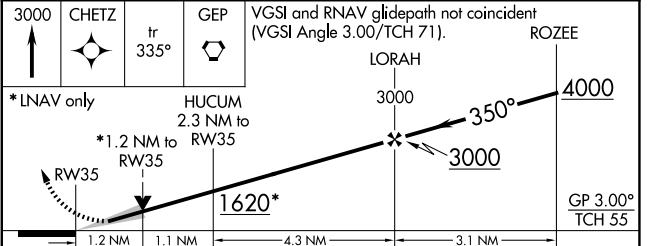
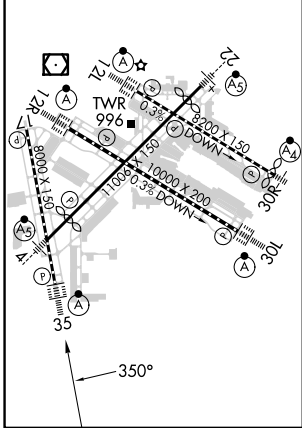
MINNEAPOLIS-ST PAUL INTL/WOLD-CHAMBERLAIN (MSP)

<p>▼ For uncompensated Baro-VNAV systems, LNAV/VNAV NA below -19°C (-2°F) or above 54°C (130°F). DME/DME RNP-0.3 NA. For inop ALS, increase LPV Cat E visibility to RVR 4000, LNAV/VNAV Cat E visibility to 1¼ SM and LNAV Cts C/D/E visibility to 1¾ SM.</p>	<p>ALSIF-2</p>	<p>MISSED APPROACH: Climb to 3000 direct CHETZ and on track 335° to GEP VORTAC and hold.</p>
--	----------------	--

D-ATIS ARR 135.35 239.275 DEP 120.8	MINNEAPOLIS APP CON 118.725 335.65 (Rwy 35) 119.3 335.65 (12L-30R, 4-22, 17) 126.95 335.65 (12R-30L)	MINNEAPOLIS TOWER 123.675 273.55 (17-35) 123.95 273.55 (12L-30R) 126.7 273.55 (12R-30L, 4-22)	GND CON N 121.8 348.6 S 121.9 348.6 W 127.925 348.6	CLNC DEL 133.2
---	--	---	---	--------------------------



ELEV 842	D	TDZE 834
HIRL all Rwys		
REIL Rwy 17		
TDZ/CL Rwys 12L, 12R, 30L, and 35		



CATEGORY	A	B	C	D	E
LPV DA		1034/18	200 (200-½)		
LNAV/VNAV DA		1204/40	370 (400-¾)		
LNAV MDA	1300/24	466 (500-½)	1300/50	466 (500-1)	
C CIRCLING	1360-1	518 (600-1)	1460-1¾ 618 (700-1¾)	1660-2¾ 818 (900-2¾)	1800-3 958 (1000-3)

NC-1, 15 MAY 2025 to 12 JUN 2025

NC-1, 15 MAY 2025 to 12 JUN 2025